

# Blood Bank Refrigerator 2°C ~ 6°C

**Venchal**  
Scientific

Venchal Scientific 214 series Blood Bank refrigerators are ideal choice for effective sample storage.

## Compact and Convenience



214-268 / 214-380

214-630

- Built-in USB data logger, remote alarm contact
- Automatic Defrost
- Sensor Backup Facility: Dual Sensor System.  
When the primary sensor fails, the secondary sensor will be activated.
- Perfect Thermal Insulation
- Access port for external temperature mapping.
- RS 485 interface
- Alarms
  - Audible/visual alarms
  - High/Low temperature
  - Low battery
  - Sensor Failure
  - Door ajar
  - Power Failure

Venchal Scientific 4°C Blood Bank Refrigerator 214 series is a reliable blood storage refrigerator for safeguarding security of whole blood, blood plasmas, blood compartments and blood samples. The intelligent constant temperature control ensures the temperature control precision within 2~6°C inside the cabinet, which can perfectly promise the temperature uniformity. The blood storage refrigerator equipped with auto-defrost glass door ensures safe medical or lab material storage.

## Scope of Application

Blood Bank refrigerator suitable for storage of whole blood, blood platelets, red blood cells, biological products, vaccines, drugs, reagents, etc.; Suitable for use in blood banks, hospitals, research institutions, disease prevention & control centers, etc

- **Constant Temperature under Intelligent Control**

Return air duct design, ensuring a temperature control precision of  $\pm 1^{\circ}\text{C}$  inside the cabinet.

High-precision computerized temperature control system, built-in sensors for upper/lower zone temperature, ambient temperature, evaporator temperature, and operation control, ensuring safe and stable operation..

- **Security System**

Perfect audible and visual alarm system comes with alarm functions for high temperature, low temperature, sensor failure, door ajar, and power failure, etc. High-efficiency Refrigeration Advanced air cooling design, precision temperature control, safeguarding security of blood.

Stainless steel inner container, copper tube evaporator, powerful refrigeration..

- **Refrigeration System**

Equipped with brand high-efficient compressor, EBM fan motor, performing efficient energy and quiet.

High-precision computerized temperature control system, built-in sensors for upper/lower zone temperature, ambient temperature, evaporator temperature, and operation control, ensuring safe and stable operation.

- **Automatic Defrost**

Return air duct design, ensuring a temperature control precision of  $\pm 1^{\circ}\text{C}$  inside the cabinet;

Equipped with automatic defrost function, force defrost..

- **Human-oriented Design**

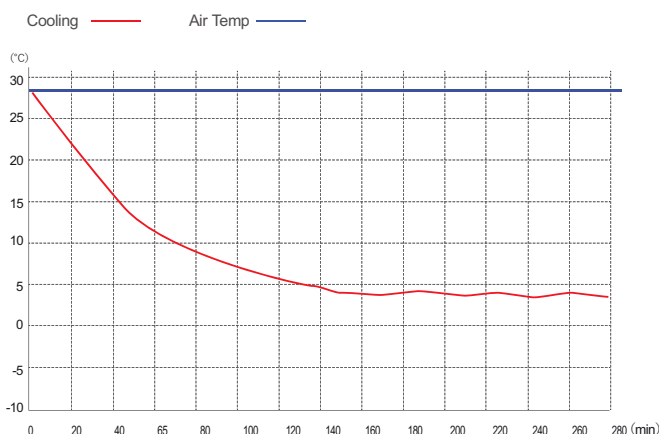
Equipped with 5 dip-coating shelves with label strips;

6 dip-coating blood bag frames, can hold 312 blood bags in 450ml for each (630 L)

5 dip-coating blood bag drawer, can hold 200 blood bags in 450ml for each (380 L)

5 dip-coating blood bag frames, can hold 220 blood bags in 450ml for each (268L)

## Cooling Performance :



## FEATURES :

- High-brightness digital temperature display allowing temperature display reach 0.1°C.
- Lockable door with key to prevent from opening door without authorizing.
- Aluminum fined copper tube and high-effective air-cooled type evaporator.
- Audible and visible alarm system with high/low temperature alarm, power failure alarm, door ajar alarm, power failure alarm, etc.

## Technical Specifications :

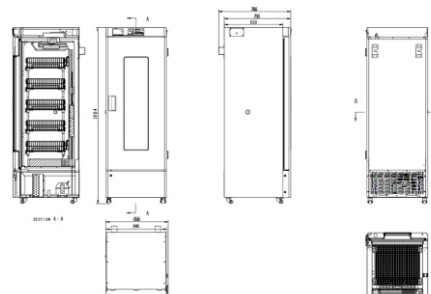
	Model No.	214-268	214-380	214-630
Technical Data	Cabinet Type	Upright		
	Capacity (L)	268	380	630
	Climate Class	N		
	Defrost Mode	Automatic		
	Refrigerant	R290, CFC- Free		
	Cooling Method	Air Cooling		
	Compressor	1 no		
	Noise(dB(A))	≤ 56		
Performance	Cooling Performance (°C)	3°C		
	Temperature Range (°C)	2°C ~ 6°C		
	Ambient Temperature (°C)	16°C ~ 32°C		
Control	Controller	Microprocessor Digital Controller		
	Display	Digital LED display		
Function	USB Interface	Built In USB Interface		
	Access Test Port	1 no. Ø 25 mm		
	Alarm	Audible & Visible : High / Low Temp., High Ambient Temp., Condenser High Temp., Sensor Failure, Door Ajar, Low Battery, Power Failure, Built in Data logger, USB Failure, Remote Alarm		
Construction	External	Epoxy Powder coated		
	Internal	Stainless steel (optional Aluminum plate with spraying)		
	Shelves	5(coated steel wired shelf)		6(coated steel wired shelf)
	Door Lock with Keys	YES		
	Lighting	LED		
	Insulation Thickness	R/L/U/B:54,D:55 mm		
	Caster	4 units of Universal Caster wheels with 2 Casters with brakes		
	Data Logging/Time/Quantity	USB/Record every 10 minute / 2 Years		
	Blood Basket	15	20	24
	RS 485	Yes		
	Remote Alarm & Battery Backup	Yes		
Electrical Data	Power Supply (V/Hz)	220 V / 50Hz		
	Rated Power (W)	400	400	440
Dimensions	Internal Dimension (WxDxH)	530 x 490 x 1145 mm	604 x 494 x 1313 mm	685 x 690 x 1373 mm
	External Dimension (WxDxH)	640 x 700 x 1856 mm	717 x 660 x 1999 mm	812 x 912 x 1978 mm
	Packing Dimension (WxDxH)	700 x 760 x 2013 mm	752 x 710 x 2150 mm	852 x 962 x 2131 mm
	Net Wt. / Gross Wt.	125/161 Kgs	134/154 Kgs	179/236 Kgs
Others	Certificate	CE, ISO9001 :2015		

## Product Image

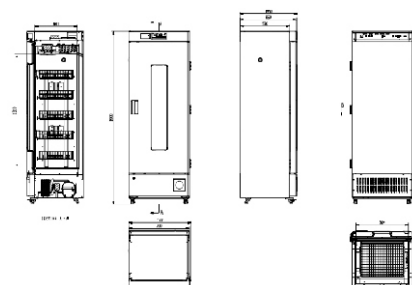


**Model : 214-268**

## External Dimensions :



**Model : 214-380**



**Model : 214-630**

