

Deep Freezers

(A Complete Range of Cold Storage Solutions)



Premio Series

Classic Series

Standard Series

Ultra Low Deep Freezers

-40°C Deep Freezers

-20°C Deep Freezers

+2°C to +8°C Pharma Freezers

Portable Freezers

Premio Series

Ultra Low Temperature Upright Deep Freezers

Temperature Range from -40°C to -80°C

- Fast Cooling down to -80°C temperature with perfect contacted evaporator System
- The Unique Refrigeration technology with Non-CFC/HCFC natural refrigerant
- High Quality stainless steel inner chamber with rounded corners for easy clean
- Mechanical designed cabinet with perfect door seal and closure
- Built in access port for external data monitoring and supply
- PC Software System : RS -232C/485 Interface Graphic monitoring for temperature on real time



► Features :

- Microprocessor PID digital controller with Self diagnostic and Alarm System :
 - High / Low limited temperature parameters Set and Value
 - Automatic voltage stabilization System (Buck Boost)
 - Password locking system for protection set parameters
 - Battery back up system for data and display of controller
 - Visible and Audible alarm system for safety operation
 - optional Co2 back up system in case of power failure
- Complete sealing and closure mechanism for ultra low temperature :
 - Triple air tight Santoprene sealing gaskets made from Thermo plastics Elastomer
 - The individual inner doors made from cold free HDPE material
 - Mechanically heated door frame seal keeps ice formation free
 - Advanced door latch system for perfect closing and easy opening
- Non CFC/HCFC Refrigeration System :
 - Cascade Refrigeration System with Natural refrigerant and hermetically sealed compressor guarantees excellent cooling performance and durability & Stability are used for compliance with the New Environmental protection Regulation
- Alarm System : High /Low limit temperature alert, Electric power failure warning alert, Door Ajar alarm, Low battery backup level warning alert, High and Low temperature check alert, Password for set parameters alert, Self diagnostic system alert, Condenser temperature alarm alert
- Heavy duty and user friendly designed chamber structure
 - Heavy duty caster with built in adjustable stands for easy movement
 - 145mm High density polyurethane foamed insulation maintain cool temperature
 - Easy opening access door for electric and refrigeration compartments
 - Height adjustable shelf is stainless steel or epoxy powder coated wire
- Automatic voltage regulation and Energy saving electric circuit system :
 - Efficient and durable electric parts and components, provides long life cycle and minimize electric load leading to consumption of low energy and to protection
- Optional Accessory : 7 days Chart Recorder, Electro Magnetic door, Password Locking system, LN2 & Co2 Backup system

► Specifications :

Cat. No.	546-010	546-015	546-020	546-025
Temp. Range	-40°C~-80°C			
Capacity	369 Ltr	492 Ltr	615 Ltr	730 Ltr
Refrigeration Type	Cascade Refrigeration System / Upright Type			
Refrigerator	1HP x 2	1HP x 2	3/2HP x 2	3/2HP x 2
Controller	Microprocessor Digital PID Controller with Battery back up system			
Display	Digital LED display			
Insulation	145 mm High density polyurethane foamed insulation			
Interior	Stainless Steel (STS 304)			
Exterior	Stainless Steel (STS 430), (STS 304) is optional			
Inner Door	Inner door is made of Tempered safety glass			
Safety	High /Low temperature , Protector, ELCB, Thermal Protector			
Power Supply	110V, 60Hz or 220V,/230V, 50/60Hz			
Inner Dimension (WxDxH) mm	600x650x960	600x650x1280	750x650x1280	750x770x1280
Outer Dimension (WxDxH) mm	940x950x1710	940x950x2030	1090x950x2030	1090x1070x2030

► Optional Accessories :



Wire Shelf (Standard) :

SS Wire Shelves Provides Durability

Easy for Ventilation Providing an even temp. distribution



Chart Recorder :

7 days Chart Recorder



LN2 & Co2 Backup system



Electro Magnetic door Password Locking system

► Ordering Information :

Cat. No.	Description
546-010	Ultra Low Temp. Deep Freezer Temp. Range from -40°C~-80°C, Capacity 369 Liters
546-015	Ultra Low Temp. Deep Freezer Temp. Range from -40°C~-80°C, Capacity 492 Liters
546-020	Ultra Low Temp. Deep Freezer Temp. Range from -40°C~-80°C, Capacity 615 Liters
546-025	Ultra Low Temp. Deep Freezer Temp. Range from -40°C~-80°C, Capacity 730 Liters

** Specifications can be changed without prior notice for quality improvement

-86°C Ultra Low Temperature Freezer

Compact and Convenience

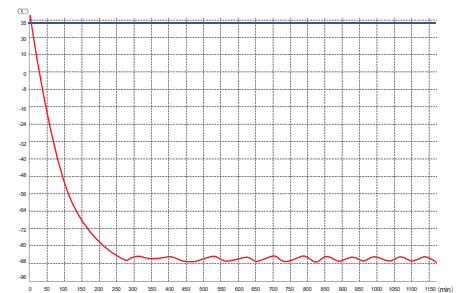
Venchal Scientific 861 series Ultra Low Deep Freezers are ideal choice for effective sample storage.



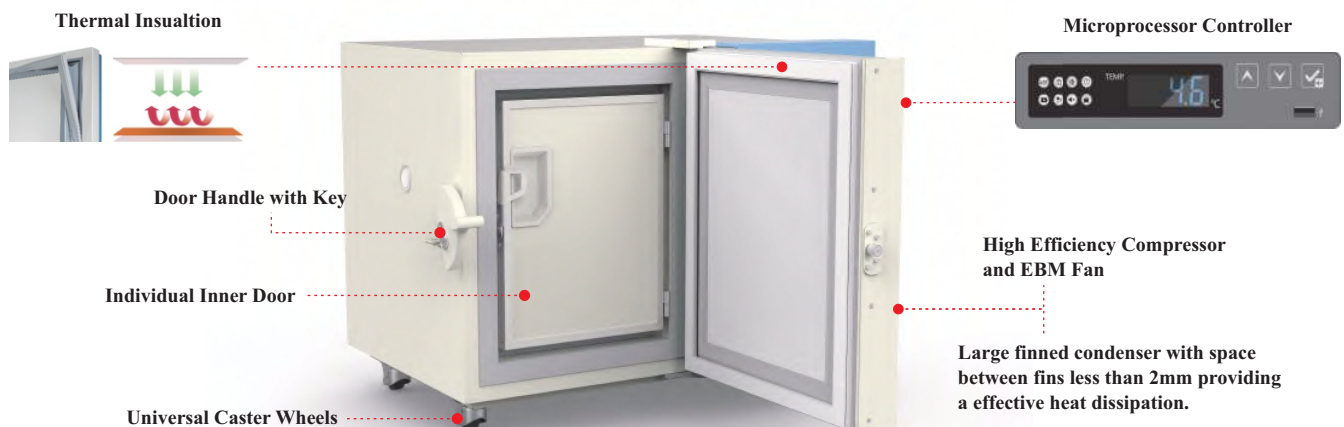
Performance Data

Cooling Temperature —

Air Temperature —



861-050 Ultra Low Temperature Freezer is a mini deep freezer for laboratory and medical grade. This ultra low deep freezer is equipped with high-precision temperature control, ensuring the temperature uniformity in the cabinet with a adjustable range from -10°C to -86°C. Microprocessor controller with Large & Bright LED digital temperature display can be seen from distance. The targeted refrigeration of the deep freezer enables fast refrigeration. It is designed in human-oriented with energy saving and environmentally friendly.



-86°C Ultra Low Temperature Freezer

Compact and Convenience

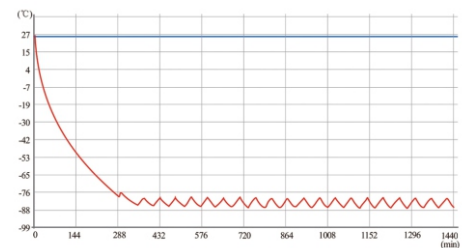
Venchal Scientific 861 series Ultra Low Deep Freezers are ideal choice for effective sample storage.



Performance Data

Cooling Temperature —

Air Temperature —



812-100 Ultra Low Temperature Freezer is a mini deep freezer for laboratory and medical grade. This ultra low deep freezer is equipped with high-precision temperature control, ensuring the temperature uniformity in the cabinet with a adjustable range from -10°C to -86°C. Microprocessor controller with Large & Bright LED digital temperature display can be seen from distance. The targeted refrigeration of the deep freezer enables fast refrigeration. It is designed in human-oriented with energy saving and environmentally friendly. Equipped with Temperature record printer with 72 hours Backup.

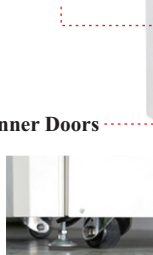
Thermal Insulation



Microprocessor Controller



Door Handle with Key



High Efficiency Compressor and EBM Fan

Large finned condenser with space between fins less than 2mm providing a effective heat dissipation.

2 Individual Inner Doors



Universal Caster Wheels with Level Foot design



High Precision Temperature Control System

- The High Precision Microprocessor temperature control system and platinum resistor temperature sensors can realize more precise temperature control and enable users to set temperature inside the cabinet with a controllable range from -10°C to -86°C ensure the controlling precision 1°C .
- The Large & Bright LED digital temperature display simultaneously display the chamber temperature, Power Supply, Voltage, Ambient Temperature, Alarm and other parameters, etc.,. The running status is clearly displayed and can be seen from distance.



Security & Alarm System

- It has a Multiple Audible & Visible Alarm functions, such as High / Low Temperature Alarm, Sensor Failure Alarm, Door Ajar Alarm, High Ambient Temperature Alarm, System Failure Alarm, Power Failure Alarm, Low Battery Alarm, Communication Failure Alarm, etc.,.
- The turn-on delay and stopping interval protection can ensure reliable operation.
- The Lockable door, Keyboard Lock and Password protection prevents any unauthorized access and operation without permission.



Energy Saving

Effective Thermal Insulation System

- The Ultra Low temperature freezer is equipped with VIP+ vacuum insulation foaming door with seal. The two layer insulated foam door with double seal and the outdoor insulation design with multiple patents can prevent loss of cooling effectively and to improve temperature stability.
- The six sides of the cabinet are made from high-performance vacuum insulation materials, which can perfectly improve the thermal insulation performance.
- Individual inner door can be opened independently to minimize frost buildup and prevent loss of cooling inside the chamber.



Powerful Refrigeration System

- Ultra Low deep freezer is adopted high-efficiency hermetically sealed compressor and famous EMB fan, which are energy saving and environmentally friendly.
- CFC Free mixture refrigerant composing of R134a, R404a, R23, R410a, N2 and so on
- The large finned condenser with a space between fins less and equal to 2mm provides effective heat dissipation.
- Specialized refrigeration system design using whisper quiet fan and compressor less than 50dB



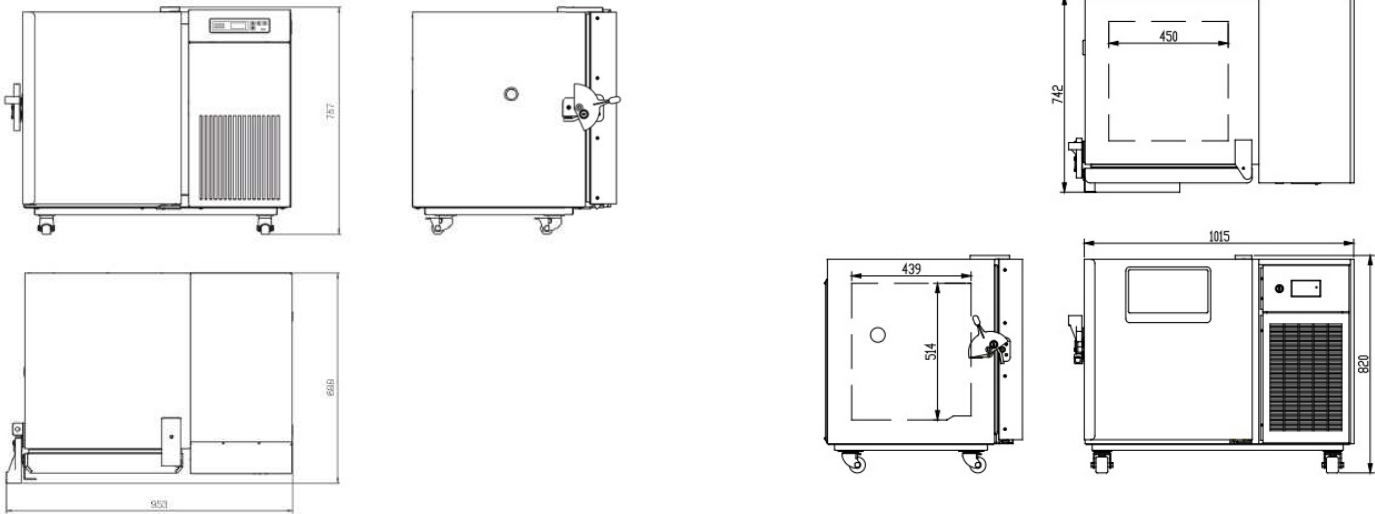
Ergonomic Design

- The interior are made of SS304 and Exterior is painted steel board low temperature resistance, anti-corrosion for long Service life and easy cleaning.
- The door with new type assisting rotating door handle to be opened easily.
- The two door design including the inner door and outer door can lock the cool air inside the chamber and ensures thermal insulation double silicon gasket seal for a long period.
- Equipped with battery backup for printer and controller display.
- 4 Universal Caster wheels, easy for movement.
- Optional : Chart recorder, Printer, Rs485, Co2 Backup System, storage racks & Boxes, Remote Alarm system.

Technical Specifications :

	Model No.	861-050	861-100	
Technical Data	Cabinet Type	Upright		
	Capacity (L)	50	100	
	Climate Class	N		
	Cooling Type	Direct cooling		
	Defrost Mode	Manual		
	Compressor	High Efficiency Danfoss Compressor 1no		
	Refrigerant	CFC- Free, Mixture Gas	CFC- Free, Mixture Gas / 420	
	Evaporator	D-form copper tube	Coil Evaporator	
	Fan Motor	EBM		
	Noise(dB(A))	≤ 50		
	Performance	Cooling Performance (°C)	-86°C	
Temperature Range (°C)		-10°C ~ -86°C		
Ambient Temperature (°C)		16°C ~ 32°C		
Control	Controller	Microprocessor		
	Display	LED Digital Display		
Function	USB Interface	YES		
	Access Test Port	1 as Standard		
	Alarm	Audible & Visible : High / Low Temperature, Sensor Failure, Door Ajar, System Failure, High Ambient Temperature, Condenser Cooling Failure, Low Battery, Power Failure, Abnormal Voltage		
Construction	External	High Quality Steel Plates with Powder Coating		
	Internal	304 grade Stainless Steel		
	External Door	1 no		
	Inner Door	1 Individual Inner Doors	2 Individual Inner Doors	
	Shelves	1 shelf made of SS304		
	Door Lock with Keys	YES		
	Door with Heater	YES, Hot gas Surrounding		
	Insulation Thickness	VIP Plus vacuum insulation 130 mm		
	Data Logging/Time/Quantity	USB/Record every 1 minute / 365 days		
	Battery	48hours back-up battery		
	Inventory Boxes	Inventory 2" boxes: 42pcs boxes		
	Vials	Vials (2ml): 4200pcs		
	Caster	4 units of Universal Caster wheels		
	Foot	—	2 Leveling Foot	
Electrical Data	Power Supply (V/Hz)	220 V ~ 240 V / 50Hz, 220V / 60Hz		
	Rated Power (W)	650	1000	
	Input Power (W)	970	850	
	Power Consumption (KWh/24h)	7.97	9.8	
	Rated Current (A)	4.49	9.5	
Dimensions	Internal Dimension (WxDxH)	305x425x430 mm	450x439x514 mm	
	External Dimension (WxDxH)	953x668x757 mm	1066x742x820 mm	
	Packing Dimension (WxDxH)	1035x760x1184 mm	1180x825x995 mm	
	Net Wt. / Gross Wt.	104 Kgs / 122 kgs	145 Kgs / 176.5 kgs	
Accessories	Optional	Chart Recorder, CO2 Backup System, LN2 Backup System, Remote Alarm System		
Others	Certificate	CE, ISO9001 :2015		

External Dimensions :



-86°C Ultra Low Temperature Freezer



Ultra Low Deep Freezer is specially designed to meet the demands for long-term and safe storage of the high-valued medical and laboratory materials. The new structure of the Ultra Low Deep Freezer has a new look Microcomputer controller comes with 7 inches LED touch screen display, giving you more user-friendly and convenient interface can set the temperature uniformity inside the cabinet with a adjustable range from -10°C to -86°C with an uniform accuracy of 1°C. It comes with 2 individual inner doors can be opened independently. The optimized foaming insulation inside the doors provides better temperature performance. The targeted refrigeration of the deep freezer enables fast refrigeration. It is designed in human-oriented with energy saving and environmentally friendly.

Scope of Application :

The ultra low temperature freezer is suitable for use in Blood Banks, Hospitals, Health and Disease Prevention Systems, Research Institutions, Colleges & Universities, Electronic Industry, Biological Engineering, Laboratories in Colleges & Universities, Military Enterprises, Deep Sea Fishing Companies, etc.,



High Precision Temperature Control System

- The High Precision Microprocessor temperature control system and platinum resistor temperature sensors can realize more precise temperature control and enable users to set temperature inside the cabinet with a controllable range from -10°C to -86°C ensure the controlling precision 1°C .
- The Large 7" Inch LED Touch Screen display simultaneously display the chamber temperature, Power Supply, Voltage, Ambient Temperature, Alarm and other parameters, etc,. The running status is clearly displayed and can be seen from distance.



Security & Alarm System

- It has a Multiple Audible & Visible Alarm functions, such as High / Low Temperature Alarm, Sensor Failure Alarm, Door Ajar Alarm, High Ambient Temperature Alarm, System Failure Alarm, Power Failure Alarm, Abnormal Voltage Alarm, Low Battery Alarm, Condenser Cooling Failure Alarm, etc,.
- The turn-on delay and stopping interval protection can ensure reliable operation.
- The Lockable door, Keyboard Lock and Password protection prevents any unauthorized access and operation without permission.



Energy Saving

Effective Thermal Insulation System

- The Ultra Low temperature freezer is equipped with VIP+ vacuum insulation foaming door with seal. The two layer insulated foam door with double seal and the outdoor insulation design with multiple patents can prevent loss of cooling effectively and to improve temperature stability.
- The six sides of the cabinet are made from high-performance vacuum insulation materials, which can perfectly improve the thermal insulation performance.
- Two individual inner doors can be opened independently to minimize frost buildup and prevent loss of cooling inside the chamber.



Powerful Refrigeration System

- Ultra Low deep freezer is adopted high-efficiency hermetically sealed compressor and famous EMB fan, which are energy saving and environmentally friendly.
- CFC Free mixture refrigerant composing of R134a, R404a, R23, R410a, N2 and so on
- The large finned condenser with a space between fins less and equal to 2mm provides effective heat dissipation.
- Specialized refrigeration system design using whisper quiet fan and compressor less than 50dB



Ergonomic Design

- The interior are made of SS304 and Exterior is painted steel board low temperature resistance, anti-corrosion for long Service life and easy cleaning.
- The door with new type assisting rotating door handle to be opened easily.
- The two door design including the inner door and outer door can lock the cool air inside the chamber and ensures thermal insulation double silicon gasket seal for a long period.
- Equipped with temperature printer, records 7 days data. 72 hours battery backup for printer and controller display
- 4 Universal Caster wheels with Leveling foot design, easy for movement and fixation.
- Optional : Chart recorder, Co2 Backup System, LN2 backup system, storage racks & Boxes, Remote Alarm system.

► Technical Specifications :

	Model No.	861-400	861-530
Technical Data	Cabinet Type	Upright	
	Capacity (L)	398	528
	Climate Class	N	
	Cooling Type	Direct cooling	
	Defrost Mode	Manual	
	Compressor	1no	
	Refrigerant	CFC- Free, Mixture Gas	
	Evaporator	D-Form Copper tube	
	Fan Motor	EBM	
	Noise(dB(A))	50	
Performance	Cooling Performance (°C)	-86°C	
	Temperature Range (°C)	-10°C ~ -86°C	
	Ambient Temperature (°C)	16°C ~ 32°C	
Control	Controller	Microprocessor	
	Display	7" LED Touch Screen Display	
Function	USB Interface	YES	
	Access Test Port	2	
	Alarm	Audible & Visible : High / Low Temperature, Sensor Failure, Door Ajar, System Failure, USB Failure, High Ambient Temperature, Condenser Cooling Failure, Low Battery, Power Failure, Abnormal Voltage	
Construction	External	High Quality Steel Plates with Powder Coating	
	Internal	304 grade Stainless Steel	
	External Door	1 no	
	Inner Door	2 Individual Inner Doors	
	Shelves	3 shelf made of SS304	
	Door Lock with Keys	YES	
	Inventory 2ml vial	30000	40000
	Insulation	VIP + Vacuum Insulation panel with 130 mm	
	Inventory Rack 2"	5 x 5 x 12 = 300	5 x 5 x 16 = 400
	Caster	4 units of Universal Caster wheels	
	Foot	2 Leveling Foot	
Electrical Data	Power Supply (V/Hz)	220 V ~ 240 V / 50Hz, 220V / 60Hz	
	Rated Power (W)	950	1265
	Input Power (W)	980	1445
	Power Consumption (KWh/24h)	11	12.82
	Rated Current (A)	5	6.57
Dimensions	Internal Dimension (WxDxH)	440x696x1266 mm	585x696x1266 mm
	External Dimension (WxDxH)	785x1041x1947 mm	930x1041x1947 mm
	Packing Dimension (WxDxH)	880x1150x2085 mm	1025x1150x2085 mm
	Net Wt. / Gross Wt.	237 Kgs / 272 kgs	286 Kgs / 319 kgs
Accessories	Optional	Chart Recorder, CO2 Backup System, LN2 Backup System, Remote Alarm System, Printer	
Others	Certificate	CE, ISO9001 :2015	

► Technical Specifications :

	Model No.	861-678	861-778	861-858	861-1000
Technical Data	Cabinet Type	Upright			
	Capacity (L)	678	778	858	1000
	Climate Class	N			
	Cooling Type	Direct cooling			
	Defrost Mode	Manual			
	Compressor	2 no			
	Refrigerant	CFC- Free, Mixture Gas			
	Evaporator	D-Form Copper tube			
	Fan Motor	EBM			
	Noise(dB(A))	56			
	Performance	Cooling Performance (°C)	-86°C		
Temperature Range (°C)		-10°C ~ -86°C			
Ambient Temperature (°C)		16°C ~ 32°C			
Control	Controller	Microprocessor			
	Display	7" LED Touch Screen Display			
Function	USB Interface	YES			
	Access Test Port	3			
	Alarm	Audible & Visible : High / Low Temperature, Sensor Failure, Door Ajar, System Failure, High Ambient Temperature, Condenser Cooling Failure, Low Battery, Power Failure, Abnormal Voltage			
Construction	External	Cooled rolled steel with annealed painting with a nice finish			
	Internal	304 grade Stainless Steel			
	External Door	1 no			
	Inner Door	4 Individual		2 Individual	
	Shelves (SS304)	3 shelves		4 shelves	3 shelves
	Door Lock with Keys	YES			
	Inventory 2ml vial	50000	60000	66000	77000
	Insulation	VIP + Vacuum Insulation panel with 155 mm			
	Inventory Rack 2"	5 x 5 x 20 = 500	5 x 5 x 24 = 600	5x5x12+6x5x12 = 660	5x5x14+6x5x14 = 770
	Caster	4 units of Universal Caster wheels			
	Foot	2 Leveling Foot			
Electrical Data	Power Supply (V/Hz)	220 V ~ 240 V / 50Hz, 220V / 60Hz			
	Input Power (W)	1450	1450	1825	1900
	Rated Current (A)	7.5	7.5	8.5	9.3
	Power Consumption (KWh/24h)	14.4	14.5	16.5	19.15
Dimensions	Internal Dimension (WxDxH)	750x696x1286 mm	865x696x1286 mm	877x696x1378 mm	1022x696x1378 mm
	External Dimension (WxDxH)	1090x1025x1955 mm	1205x1025x1955 mm	1217x1025x2005 mm	1362x1025x2002 mm
	Net Wt.	330 Kgs	380 Kgs	390 Kgs	430 Kgs
Accessories	Optional	Chart Recorder, CO2 Backup System, LN2 Backup System, Remote Alarm System			
Others	Certificate	CE, ISO9001 :2015			

Ultra Low Temp. Chest Deep Freezers

Temperature Range from -10°C to -86°C



Features :

- Microprocessor Touch Screen controller with USB
- Adjustable Temperature from -10°C to -86°C
- Controlling precision 1°C
- Bright LED Digital temperature Display (can be seen from distance)
- High Efficiency Danfoss Compressor and Germany EBM fan motor
- 2 units compressors to maintain constant cooling temperature.
- Mixture Refrigerant, CFC free
- Password protection to avoid unauthorized access
- Delayed start and safe stop interval between restart and being terminated
- Over Voltage Protection, Over Temperature Protection
- Audible and visual alarm, High or Low temperature alarm, System failure alarm, Power failure alarm, Low battery alarm, Door open alarm, Filter blocking alarm.
- Outer Body is painted Steel Board and Interior are made of SS304
- Two-times foaming technology. 100-155mm foaming insulation with VIP+.
- 72 hour battery back up for printer and controller display.
- Equipped with temperature printer, record 7days data.
- 4units Casters for easy handling

► Specifications :

Cat. No.	813-138	813-328	813-438	813-668
Capacity	138 Litres	328 Litres	438 Litres	668 Litres
Temperature Range	-10°C ~ -86°C			
Temp. Accuracy	± 1°C			
Temp. Control	Microprocessor Touch Screen Controller with LED Display			
Compressor	High Efficiency Danfoss Compressor			
Refrigerant	Mixture refrigerant, CFC Free			
Alarm	Audible and Visual alarm, High or low temperature alarm, Power failure alarm, Low battery alarm, Door open alarm, Filter blocking alarm, system failure alarm			
Body Structure	Outer body is painted Steel Board and Interior are made of SS304			
Insulation	Two times foaming technology, 100-155mm foaming insulation with VIP+			
Input Power	300W	1000W	1800W	2000W
Power Supply	220V/50Hz 1Phase, can be changed as 220V/60Hz or 110V 50V/60Hz			
Outside Dimension (WxDxH)	600 x 560 x 910 mm	940 x 840 x 1552 mm	940 x 840 x 1999 mm	940 x 840 x 1999 mm
Inside Dimension (WxDxH)	343 x 343 x 415 mm	582 x 470 x 768 mm	740 x 450 x 1200 mm	662 x 600 x 1330 mm
Weight (Approx.)	60/64 Kgs	225/250 Kgs	330/360 Kgs	360/380 Kgs
Optional Accessories	Chart Recorder, CO2 Back up System, Touch Screen, Storage Racks/Boxes, Remote alarm system.			
Certificate	ISO9001, ISO14001, ISO13485			

At any time, the manufacturer may bring modifications to the model above described, for technical or commercial reasons. The picture does not necessary shows the product in the standard version.

Classic Series

-40°C Upright Deep Freezers Temp. Range from -10°C to -40°C



Features :

- ◆ Microprocessor Temperature controller
- ◆ Temperature ranging from -10°C to -40°C can be set freely
- ◆ Controlling precision $\pm 1^\circ\text{C}$
- ◆ Bright LED display (Can be seen from distance)
- ◆ High Efficiency Danfoss Compressor and Germany EBM fan motor
- ◆ R507, CFC free Refrigerant
- ◆ Cooling Coil attached to each shelf
- ◆ High Density PUF 90mm foaming Insulation
- ◆ Audible and visual alarm, High or Low temperature alarm, System failure alarm,
- ◆ Delayed start and safe stop interval between restart and being terminated
- ◆ Outer Body is painted Steel Board and Interior are made of SS304, ABS
- ◆ Safety Lock System on the door with Door Handle
- ◆ Quick freezing switch to make fast cooling
- ◆ 4 units casters for easy handling
- ◆ Ergonomic Design more storage inner space but occupies less outer space
- ◆ User friendly operation

► Specifications :

Cat. No.	2462-090	2462-270	2462-450	2462-530
Capacity	90 Liters	270 Litres	450 Litres	530 Litres
Temperature Range	-10°C ~ -40°C			
Temp. Accuracy	$\pm 1^\circ\text{C}$			
Temp. Uniformity	+4°C			
Temp. Control	Microprocessor Controller with Bright Visible LED Display			
Alarm	Audible and Visual alarm, High or Low temperature alarm, System failure alarm			
Refrigerant	R507, CFC Free			
Compressor	High Efficiency Danfoss Compressor			
Body Structure	Outer body is painted Steel Board and Interior are made of SS304, ABS			
Door	Safety lock system on the door with door handle			
Shelves	4 Plastic	7 Plastic	9 Plastic	12 ABS
Power Supply	220V/50Hz 1Phase, can be changed as 220V/60Hz or 110V 50V/60Hz			
Input Power	280W	300W	450W	1000W
Outside Dimension (WxDxH)	623 x 544 x 842 mm	623 x 544 x 1680 mm	655 x 780 x 1845 mm	940 x 840 x 1999 mm
Packing Dimension (WxDxH)	645 x 585 x 890 mm	650 x 750 x 1825 mm	765 x 850 x 2050 mm	960 x 1070 x 2210 mm
Weight (Approx.)	44/88 Kgs	65/70 Kgs	120/140 Kgs	235/250 Kgs
Optional Accessories	CO2 Back UP system, Chart Record, Touch Screen, Remote Alarm System			
Certificate	ISO9001, ISO14001, ISO13485			

► Ordering Information :

Cat. No.	Description
2462-090	-40°C Upright Deep Freezer, Capacity 90 Liters
2462-270	-40°C Upright Deep Freezer, Capacity 270 Liters
2462-450	-40°C Upright Deep Freezer, Capacity 450 Liters
2462-530	-40°C Upright Deep Freezer, Capacity 530 Liters

Classic Series

-40°C Chest Deep Freezers

Temp. Range from -10°C to -40°C



Features :

- ◆ Microprocessor Temperature controller
- ◆ Temperature ranging from -10°C to -40°C can be set freely
- ◆ Controlling precision $\pm 1^{\circ}\text{C}$
- ◆ Bright LED display (Can be seen from distance)
- ◆ High Efficiency Danfoss Compressor and Germany EBM fan motor
- ◆ R507, CFC free Refrigerant
- ◆ High Density PUF 110mm foaming Insulation
- ◆ Audible and visual alarm, High or Low temperature alarm, System failure alarm,
- ◆ Delayed start and safe stop interval between restart and being terminated
- ◆ Outer Body is painted Steel Board and Interior are made of SS304 /ABS
- ◆ Safety Lock System on the Top door with Door Handle
- ◆ Quick freezing switch to make fast cooling
- ◆ 4 units casters for easy handling
- ◆ Ergonomic Design more storage inner space but occupies less outer space
- ◆ User friendly operation

► Specifications :

Cat. No.	2463-110	2463-250	2463-350
Capacity	110 Liters	250 Litres	350 Litres
Temperature Range	-10°C ~ -40°C		
Temp. Accuracy	$\pm 1^{\circ}\text{C}$		
Temp. Uniformity	+4°C		
Temp. Control	Microprocessor Controller with Bright Visible LED Display		
Alarm	Audible and Visual alarm, High or Low temperature alarm, System failure alarm		
Refrigerant	R507, CFC Free		
Compressor	High Efficiency Danfoss Compressor		
Body Structure	Outer body is painted Steel Board and Interior are made of SS304 / ABS		
Door	Safety lock system on the door with door handle		
Insualtion	High Density PUF 90mm foaming Insulation		
Power Supply	220V/50Hz 1Phase, can be changed as 220V/60Hz or 110V 50V/60Hz		
Input Power	260W	265W	300W
Outside Dimension (WxDxH)	583 x 619 x 870 mm	730 x 1204 x 968 mm	730 x 1554 x 968 mm
Packing Dimension (WxDxH)	625 x 655 x 975 mm	770 x 1290 x 1145 mm	770 x 1645 x 1145 mm
Weight (Approx.)	35/40 Kgs	85/90 Kgs	100/110 Kgs
Optional Accessories	CO2 Back UP system, Chart Record, Touch Screen, Remote Alarm System		
Certificate	ISO9001, ISO14001, ISO13485		

► Ordering Information :

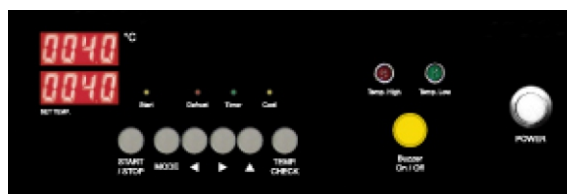
Cat. No.	Description
2463-110	-40°C Chest Deep Freezer, Capacity, 110 Liters
2463-250	-40°C Chest Deep Freezer, Capacity, 250 Liters
2463-350	-40°C Chest Deep Freezer, Capacity, 350 Liters

Premio Series

-25°C Upright Deep Freezers
Temperature Range from -10°C to -25°C



Microprocessor Digital PID Controller
Audible & Visible Alarm System



► Features :

- Precise Temperature Control : Microprocessor PID Controller ensures the most accurate temperature control and maintains cooled temperature during defrost cycle by unique designated technology.
- Temperature Range from -10°C to -25°C
- Automatic Defrost & Dehumidify System (Option) : Unique air flow circulation and defrost system provides high precision temperature uniformity and stability.
- Audible and Visible Alarm System : High / Low temperature alarm, Power Failure alarm, Door Ajar alarm system provides safety & Security storage.
- Auto-tune
- Non-CFC/HCFC Refrigeration System : CFC / HCFC Free Hermetically sealed compressor and Natural Refrigerant gas are used for compliance with the New Environmental Regulation.
- Material : Interior & Exterior, shelf are clean and durable in Stainless steel.
- Shelves : SS Epoxy coated wire shelves as standard, Conveniently use as a drawer shelf (option).
- Magnetic Packing with adjustable tension Door : Magnetic packing with adjustable enforced tension door prevent cold temperature from any air leakage.
- Metal Solid door with Air tight gasket : Protects samples and reagents from sun light.
- High-Density Polyurethane foam Insulation : With 60mm thickness Insulation provides excellent low temperature and maintains cool temperature for a long time in case of power failure.
- PC Software System : RS-232C / 485 interface to LIS / HIS requirement can be ordered as option.
- Four Caster wheels for easy movement.

Premio Series

► Specifications :

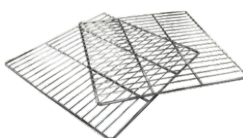
Cat. No.	2510-402	2510-403	2510-4034	2510-404	2510-4044
Temp. Range	-10°C~-25°C Max. by indirect cooling system				
Temp. Accuracy	Set Accuracy ±1°C				
Temp. Uniformity	±3°C at -20°C				
Capacity	295Ltr	612Ltr		1125Ltr	
Controller	Microprocessor Digital PID Controller				
Display	Play & LED signal lamps display				
Solid Swing Door	Single Door	Single Door	Double Solid Half Door	Double Door	Four Solid Half Door
Interior	Stainless Steel (STS 304)				
Exterior	Stainless Steel (STS 430), (STS 304) is optional				
Inner Door	Inner door is made of Tempered safety glass				
Shelves (Epoxy Coated Wire)	3EA	6EA	6EA	12EA	12EA
Compressor Non-CFC 404A	1/2 HP	3/4 HP	3/4 HP	1 HP	1 HP
Defrost	Hot gas defrost system by user setting				
Alarm	Audible & Visible alarm, High & Low Temperature alarm, Power Failure alarm, Door ajar alarm system				
Safety	High & Low Temperature Protector, ELCB, Thermal Protector				
Optional Accessories	Automatic Defrost & Dehumidify System, 7 days Chart Recorder, Digital Recorder, Pc Software System, Battery Backup System, SS Drawer shelfe, Air Circulation, Compliance with international medical standard				
Power Supply	110V, 60Hz or 220V,/230V, 50/60Hz				
Inner Dimension (WxDxH) mm	560x660x880	620x690x1410		1140x690x1327	
Outer Dimension (WxDxH) mm	685x785x490	740x805x1980		1260x840x1980	

► Optional Accessories :

Wire Shelf (Standard) :

SS Wire Shelves Provides Durability

Easy for Ventilation Providing an even temp. distribution



Perforated Shelf :

SS Shelves Provides Durability

Suitable for using heavy weight specimens

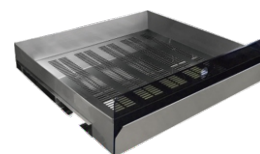


Chart Recorder :

7 days Chart Recorder

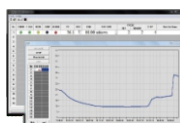


Digital Recorder :



PC Software System :

RS-232/485 Interface Graphic Monitoring for temperature on Real-Time



Battery Backup System :



Compliance with International Medical Standard



► Ordering Information :

Cat. No.	Description
2510-402	-25°C Upright Deep Freezer, Capacity 295 Liters, Solid Swing Single Door
2510-403	-25°C Upright Deep Freezer, Capacity 612 Liters, Solid Swing Single Door
2510-4034	-25°C Upright Deep Freezer, Capacity 612 Liters, Solid Swing Double Half Door
2510-404	-25°C Upright Deep Freezer, Capacity 1125 Liters, Solid Swing Double Door
2510-4044	-25°C Upright Deep Freezer, Capacity 1125 Liters, Solid Swing Four Solid Half Door

** Specifications can be changed without prior notice for quality improvement

-25°C Upright Deep Freezers
Temp. Range from -10°C to -25°C



Features :

- ◆ Microprocessor Temperature Controller
- ◆ Temperature ranging from -10°C to -25°C can be set freely
- ◆ Controlling precision $\pm 1^\circ\text{C}$
- ◆ Bright LED display
- ◆ Delayed start and safe stop interval between restart and being terminated
- ◆ Audible and visual alarm, High or Low temperature alarm, System failure alarm
- ◆ Outer Body is painted Steel Board and Interior are made of ABS / SS
- ◆ Safety Lock System on the door with Door Handle
- ◆ 4 units casters wheels for easy handling
- ◆ High Efficiency Danfoss Compressor and Germany EBM fan motor
- ◆ R134a, CFC free Refrigerant Eco Friendly Hermetically sealed immersion
- ◆ High Density PUF 90-120mm foaming Insulation
- ◆ Quick freezing switch to make fast cooling
- ◆ Ergonomic Design more storage inner space but occupies less outer space
- ◆ User friendly operation

► Specifications :

Cat. No.	2512-270	2512-350	2512-450
Capacity	270 Litres	350 Litres	450 Litres
Temperature Range	Ambient -10°C~-25°C		
Temp. Accuracy	$\pm 1^\circ\text{C}$		
Temp. Uniformity	+4°C		
Temp. Control	Microprocessor Controller with Bright Visible LED Display		
Alarm	Audible and Visual alarm, High or Low temperature alarm, System failure alarm		
Refrigerant	R134a, CFC Free Refrigerant Eco Friendly Hermetically sealed immersion		
Compressor	High Efficiency Danfoss Compressor		Double Compressor to each chamber
Body Structure	Outer body is painted Steel Board and Interior are made of ABS		
Door	Single door with Safety lock system on the door with door handle		Double door with Safety lock system
Shelves Adjustable	7 Units plastic drawer inside	9 Units plastic drawer inside	12 Units ABS drawer / 2 Compartments
Power Supply	220V/50Hz 1Phase, can be changed as 220V/60Hz or 110V 50V/60Hz		
Input Power	370W	450W	450W
Outside Dimension (WxDxH)	580 x 660 x 1750 mm	660 x 780 x 1850 mm	660 x 780 x 1850 mm
Packing Dimension (WxDxH)	655 x 695 x 1820 mm	765 x 850 x 2050 mm	765 x 850 x 2050 mm
Weight (Approx.)	65/70 Kgs	70/100 Kgs	120/140 Kgs
Optional Accessories	Chart Recorder, Remote Alarm System		
Certificate	ISO9001, ISO14001, ISO13485		

► Ordering Information :

Model No.	Description
2512-270	-20°C Deep Freezer (Upright), 270 Liters, Temp. Range -10°C to -25°C, Single Door, 7 Units of plastic drawer
2512-350	-20°C Deep Freezer (Upright), 350 Liters, Temp. Range -10°C to -25°C, Single Door, 9 Units of plastic drawer
2512-450	-20°C Deep Freezer (Upright), 450 Liters, Temp. Range -10°C to -25°C, Double Door, 12 Units of ABS drawer, Dual Compressor

Classic Series

-25°C Chest Deep Freezers Temp. Range from -10°C to -25°C



Features :

- ◆ Microprocessor Temperature controller
- ◆ Temperature ranging from -10°C to -25°C can be set freely
- ◆ Controlling precision $\pm 1^\circ\text{C}$
- ◆ Bright LED display
- ◆ Delayed start and safe stop interval between restart and being terminated
- ◆ Audible and visual alarm, High or Low temperature alarm, System failure alarm
- ◆ Outer Body is painted Steel Board and Interior are made of ABS
- ◆ Safety Lock System on the Top door with Door Handle
- ◆ 4 units casters Wheels for easy handling
- ◆ High Efficiency Danfoss Compressor and Germany EBM fan motor
- ◆ R134a, CFC free Refrigerant
- ◆ High Density PUF 90-120mm foaming Insulation
- ◆ Quick freezing switch to make fast cooling
- ◆ Ergonomic Design more storage inner space but occupies less outer space
- ◆ User friendly operation

► Specifications :

Cat. No.	2513-110	2513-196	2513-358	2513-508
Capacity	110 Liters	196 Litres	358 Litres	508 Litres
Temperature Range	-10°C ~ -25°C			
Temp. Accuracy	$\pm 1^\circ\text{C}$			
Temp. Uniformity	+4°C			
Temp. Control	Microprocessor Controller with Bright Visible LED Display			
Alarm	Audible and Visual alarm, High or Low temperature alarm, System failure alarm			
Refrigerant	R134a, CFC Free			
Compressor	High Efficiency Danfoss Compressor			
Body Structure	Outer body is painted Steel Board and Interior are made of ABS			
Door	Safety lock system on the door with door handle			Double Door with Safety lock system
Insulation	High Density PUF 90-120mm Foaming Insulation			
Power Supply	220V/50Hz 1Phase, can be changed as 220V/60Hz or 110V 50V/60Hz			
Input Power	145W	180W	320W	375W
Outside Dimension (WxDxH)	550 x 585 x 855 mm	610 x 1072 x 840 mm	670 x 1295 x 908 mm	840 x 1590 x 862 mm
Packing Dimension (WxDxH)	625 x 635 x 900 mm	754 x 1130 x 990 mm	855 x 1645 x 1070 mm	855 x 1645 x 1070 mm
Weight (Approx.)	35/45 Kgs	55 Kgs	80/90 Kgs	100/110 Kgs
Optional Accessories	Chart Recorder, Storage Racks / Boxes, Remote Alarm System			
Certificate	ISO9001, ISO14001, ISO13485			

► Ordering Information :

Model No.	Description
2513110	-20°C Deep Freezer (Chest), 110 Liters, Temp. Range -10°C ~ -25°C, One basket made of steel wire
2513226	-20°C Deep Freezer (Chest), 226 Liters, Temp. Range -10°C ~ -25°C, One basket made of steel wire
2513358	-20°C Deep Freezer (Chest), 358 Liters, Temp. Range -10°C ~ -25°C, One basket made of steel wire
2513508	-20°C Deep Freezer (Chest), 508 Liters, Temp. Range -10°C ~ -25°C, Double door with two baskets made of steel wire

Combined Freezers

Combined Refrigerator & Freezer

Temperature Range from
+2°C to +8°C for Upper Chamber &
-10°C to -25°C for Lower Chamber
Separate Control for Refrigerator & Freezer



► Features :

▪ Temperature Control System :

The digital temperature display can indicate operating status clearly, and users may set the high/low temperature alarm points based on their needs.

The high-precision microcomputer temperature control system can maintain a refrigeration temperature within a range from +2°C to +8°C and a freezing temperature within a range from -10°C to -25°C.

▪ Environmentally Friendly & High-efficiency :

Environmentally-friendly Freon-free refrigerant and high-efficiency compressor supplied ensure energy saving and high efficiency.

▪ Refrigeration System :

Two compressors and separate control of the upper refrigeration chamber and the lower freezing chamber.

The CFC-free polyurethane foam technology and the thicker insulating layer can improve the effect of thermal insulation.

▪ High-precision Computerized Temperature Control :

The digital temperature display can indicate operating status clearly, and users may set the high temperature/low temperature alarm points based on their needs.

▪ Thermal Insulation System :

The CFC-free polyurethane foam technology and the thicker insulating layer can improve the effect of thermal insulation.

▪ Temperature Sensing Probe :

The temperature sensing probe can control temperature precisely.

▪ Security System :

The well-developed audible & visual alarm system makes it safer for storage.

The turn-on delay and stopping interval protection function can ensure reliability in running;

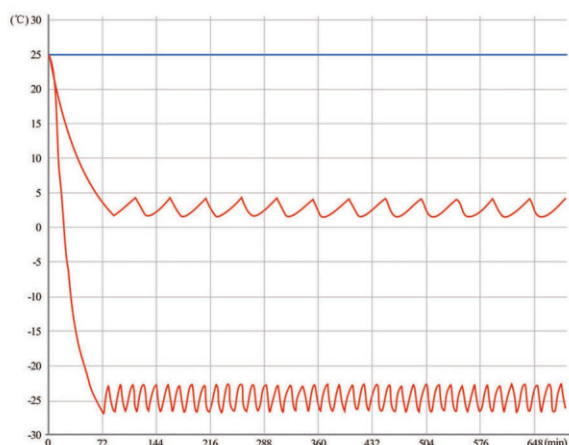
The door is equipped with a lock, improving security of sample storage.

Combined Freezers

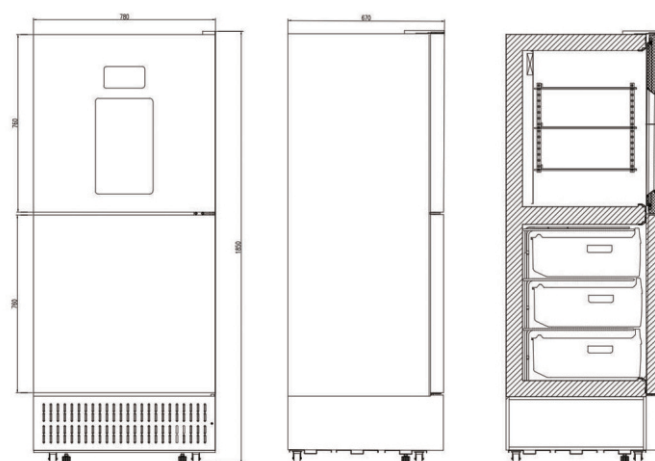
Combined Refrigerator & Freezer

- **Lighting System inside the Cabinet :**
The LED lighting system provides great visibility..
- **Human-Oriented :**
The freezing chamber is equipped with drawers and the refrigeration chamber is equipped with steel wire shelves, which are convenient for storage.
The cabinet is equipped with casters at the bottom, which are convenient for movement and placement.

Performance Data



External Dimensions :



► Technical Specifications :

Cat. No.	2512-260	2512-451
Type	Combined Refrigerator & Freezer	
Temp. Range	+2°C~+8°C Upper Chamber & -10°C ~ -26°C Lower Chamber	
Temp. Accuracy	Set Accuracy $\pm 0.1^{\circ}\text{C}$	
Capacity	Total - 260 Ltr Upper - 150 Ltr, Lower - 110 Ltr	Total - 450 Ltr Upper - 225 Ltr, Lower - 225 Ltr
Controller	Microcomputer temperature Control System	
Display	LED display	
Insulation	CFC Free Pu, High density polyurethane foam insulation with 60mm thickness Upper & 100mm Thickness down Chamber	
Interior	Stainless Steel	
Exterior	Epoxy Powder Coated	
Door Lock	YES	
Alarm	Audible & Visible Alarm, High / Low Temperature Alarm, High Ambient Temperature, Low Battery, Sensor Failure, Communication Failure (usb) Data Download Failure, Data Logging Function Not Enabled, Door Opening And Power Off,	
Drawers/Shelves	3 + 4, sheet metal refrigerated drawers and acrylic plates	
Temperature Recorder	Standard with Build-in USB datalogger for temperature data recording only for 2512-451 Model	
Input Power(W)	160	320
Power Supply	110V, 60Hz or 220V,/230V, 50/60Hz	
Internal Dimension (WxDxH) mm	Upper chamber 480x460x710, Lower chamber 420x460x470+420x460x200	Upper chamber 640*485*655, Lower chamber 640*530*655
External Dimension (WxDxH) mm	578x640x1675	780x670x1850
Weight (Kg)	63	125

Standard Series

+2°C to +8°C Upright Pharma Freezers
Temp. Range from +2°C to +8°C

Features :

- ◆ Microprocessor controller
- ◆ Temperature ranging from +2°C to +8°C can be set freely
- ◆ Controlling precision 1°C
- ◆ Display accuracy 0.1°C
- ◆ Room temperature ranging from 0°C to 32°C
- ◆ Combined with two exact sensors and auto defrost.
- ◆ Audible and visual alarm, High or Low temperature alarm, Door ajar alarm, Sensor failure alarm, Power failure alarm, Low battery alarm
- ◆ 2-layer double glass door, and inert gas inside. and lockable
- ◆ 4 Caster Wheels to move easily
- ◆ Interior fluorescent lighting
- ◆ Exterior Epoxy powder coated and interior are made of ABS
- ◆ High Efficiency Danfoss Compressor and Germany EBM fan motor
- ◆ R134a, CFC free Refrigerant
- ◆ Highly effective condenser and expansile evaporator to provide quick freezing
- ◆ Power supply : 220V/50Hz 1 phase, can be changed as 220V/60Hz or 110V 50V/60Hz

► Specifications :

Cat. No.	210-45	210-55	210-75	210-105
Capacity	45 Litres	55 Litres	75 Litres	105 Litres
Temperature Range	Ambient +2°C~+8°C			
Temp. Accuracy	1°C			
Temp. Uniformity	+4°C			
Temp. Control	Microprocessor Controller with LED Display			
Sensors	Combined with two exact Sensors and auto defrost			
Alarm	Audible and Visual alarm, High or Low temperature alarm, Door ajar alarm, Sensor failure alarm, Power failure alarm, Low Battery alarm			
Refrigerant	R134a, CFC Free			
Compressor	High Efficiency Danfoss Compressor			
Door	2-layer double glass door, and inert gas inside. and lockable			
Power Supply	220V/50Hz 1Phase, can be changed as 220V/60Hz or 110V 50V/60Hz			
Input Power	60W	70W	70W	80W
Outside Dimension (WxDxH)	450 x 450 x 575mm	470 x 450x 670 mm	470 x 450 x 850 mm	505 x 525 x 900 mm
Weight (Approx.)	15/20 Kgs	20/25 Kgs	25/30 Kgs	30/35 Kgs
Optional Accessories	Temperature Printer or Chart Recorder, Remote Alarm System			
Certificate	ISO9001, ISO14001, ISO13485			

► Ordering Information :

Cat. No.	Description
210-45	+2°C to 8°C Pharma Freezer, 45 Litres
210-55	+2°C to 8°C Pharma Freezer, 55 Litres
210-75	+2°C to 8°C Pharma Freezer, 75 Litres
210-105	+2°C to 8°C Pharma Freezer, 105 Litres

+2°C to +8°C Upright Pharma Freezers

Temp. Range from +2°C to +8°C



Features :

- ◆ Microprocessor controller
- ◆ Temperature ranging from +2°C to +8°C can be set freely
- ◆ Controlling precision 1°C
- ◆ Display accuracy 0.1°C
- ◆ Room temperature ranging from 0°C to 32°C
- ◆ Combined with two exact sensors and auto defrost.
- ◆ Audible and visual alarm, High or Low temperature alarm, Door ajar alarm, Sensor failure alarm, Power failure alarm, Low battery alarm
- ◆ 2-layer double glass door, and inert gas inside. and lockable
- ◆ 4 Caster Wheels to move easily
- ◆ Interior fluorescent lighting
- ◆ Exterior Epoxy powder coated and interior are made of ABS
- ◆ High Efficiency Danfoss Compressor and Germany EBM fan motor
- ◆ R134a, CFC free Refrigerant
- ◆ Highly effective condenser and expansile evaporator to provide quick freezing
- ◆ Power supply : 220V/50Hz 1 phase, can be changed as 220V/60Hz or 110V 50V/60Hz

► Specifications :

Cat. No.	210-300	210-400	210-520	210-1000	210-1500
Capacity	315 Litres	395 Litres	525 Litres	1015 Litres	1505 Litres
Temperature Range	Ambient +2°C~+8°C				
Temp. Accuracy	1°C				
Temp. Uniformity	+4°C				
Temp. Control	Microprocessor Controller with LCD Display				
Sensors	Combined with two exact Sensors and auto defrost				
Alarm	Audible and Visual alarm, High or Low temperature alarm, Door ajar alarm, Sensor failure alarm, Power failure alarm, Low Battery alarm				
Refrigerant	R134a, CFC Free				
Compressor	High Efficiency Danfoss Compressor				
Door	2-layer double glass door, and inert gas inside. and lockable				
Shelves Adjustable	4 shelves+1 wire steel basket	6 shelves+1 wire steel basket		12 shelves	15 shelves
Power Supply	220V/50Hz 1Phase, can be changed as 220V/60Hz or 110V 50V/60Hz				
Input Power	215W	215W	300W	700W	830W
Outside Dimension (WxDxH)	590 x 603 x 1265 mm	590 x 603 x 1265 mm	710 x 785x 1975 mm	780 x 1200 x 1894 mm	748 x 1800 x 1965 mm
Packing Dimension (WxDxH)	675 x 725 x 1625 mm	675 x 725 x 1625 mm	870 x 990 x 2150 mm	885 x 1300 x 2165 mm	920 x 1950 x 2140 mm
Weight (Approx.)	90/100 Kgs	90/100 Kgs	120/140 Kgs	120/140 Kgs	230/260 Kgs
Optional Accessories	Temperature Printer or Chart Recorder, Remote Alarm System				
Certificate	ISO9001, ISO14001, ISO13485				

► Ordering Information :

Cat. No.	Description
210-300	+2°C to +8°C Pharma Freezer, 300 Litres
210-520	+2°C to +8°C Pharma Freezer, 520 Litres
210-968	+2°C to +8°C Pharma Freezer, 968 Litres
210-1500	+2°C to +8°C Pharma Freezer, 1500 Litres

Premio Series

+2°C to +8°C Upright Pharma Freezers

Temp. Range from +2°C to +8°C



▲ 5322-201



▲ 5322-203



▲ 5322-204

► Features :

- Microprocessor PID Controller ensures the most accurate temperature control
- Temperature Range from +2°C to +8°C
- Vacuum sealed Pair glass door with embedded invisible heating film prevents viewing window from moisture condensation.
- Automatic Defrost & Dehumidify System : Unique air flow circulation and defrost system provides high precision temperature uniformity and stability.
- User friendly design : Built in Fluorescent lamp with ON/Off switch
Circulation fan stops while door is opening.
Door key lock device and password lock for safety
Height adjustable Epoxy powder coated shelf
- Audible and Visible Alarm System : High / Low temperature alarm, Power Failure alarm, Door Ajar alarm system provides safety & Security storage.
- Auto-tune
- Non-CFC/HCFC Refrigeration System : CFC / HCFC Free Hermetically sealed compressor and Natural Refrigerant gas are used for compliance with the New Environmental Regulation.
- Material : Interior & Exterior, shelf are clean and durable in Stainless steel.
- Shelves : SS Epoxy coated wire shelves as standard, Conveniently use as a drawer shelf (option).
- Magnetic Packing with adjustable tension Door : Magnetic packing with adjustable enforced tension door prevent cold temperature from any air leakage.
- High-Density Polyurethane foam Insulation with 60mm thickness Insulation provides excellent low temperature and maintains
- Pt-100 RTD Sensor provides the exact temperature control for products in the chamber (Option : Sensor in liquid bottle)
- PC Software System : RS-232C / 485 interface to LIS / HIS requirement can be ordered as option.
- Four Caster wheels for easy movement.

► Specifications :

Cat. No.	5322-201	5322-202	5322-203	5322-204
Temp. Range	+2°C~+8°C			
Temp. Accuracy	Set Accuracy $\pm 0.1^\circ\text{C}$			
Temp. Uniformity	$\pm 3^\circ\text{C}$ at 5°C			
Capacity	120 Ltr	295 Ltr	612 Ltr	1125 Ltr
Controller	Microprocessor Digital PID Controller with Battery back up system			
Display	4 Digital LED display & LED signal lamps			
Insulation	High density polyurethane foam insulation with 60mm thickness			
Interior	Stainless Steel (STS 304)			
Exterior	Stainless Steel (STS 430), (STS 304) is optional			
Door	Vacuum sealed pair glass swing door, Invisible heat film embedded, Key Locker, Adjustable tension spring			
	Magnetic Packing door			
Epoxy powder coated wire shelf	1EA / Basket 1 EA	3 EA	6 EA	12 EA
Defrost	Automatic Defrost			
Defrost Heater	300W, maintain stable temperature during defrost cycle			
Refrigerator	1/8HP	1/4HP	1/4HP	1/2HP
Alarm	Audible & Visible alarm, High & Low Temperature alarm, Power Failure alarm, Door ajar alarm system			
Air Circulation	Turbo Fan with automatic stop / Run during door open			
Defrost	Automatic Defrost			
Safety	High /Low temperature , Protector, ELCB, Thermal Protector			
Power Supply	110V, 60Hz or 220V,/230V, 50/60Hz			
Inner Dimension (WxDxH) mm	460x500x634	560x660x800	620x690x1410	1140x690x1410
Outer Dimension (WxDxH) mm	560x650x850	685x860x1490	740x915x1985	1260x915x2000

► Accessories :

**Wire Shelf (Standard) :**

SS Wire Shelves Provides Durability
Easy for Ventilation Providing an even temp. distribution

**Perforated Shelf :**

SS Shelves Provides Durability
Suitable for using heavy weight specimens

** Specifications can be changed without prior notice for quality improvement

Cat. No. 365

Temperature Range : +10/-20 °C

Capacity : 65 Ltr

Cat. No. 341

Temperature Range : +10/-10 °C

Capacity : 41 Ltr

Cat. No. 329

Temperature Range : +10/-10 °C

Capacity : 29 Ltr



► **Specifications :**

Cat. No.	365	341	329
Temp. Range	+10 / -20 °C	+10 / -10 °C	+10 / -10 °C
Capacity	65 lt (2,30 cu ft)	41 lt (1,45 cu ft)	29 lt (1,02 cu ft)
External Dimensions (W x D x H) cm	70 x 44 x 47 cm	60 x 37 x 40 cm	53 X 34,5 X 39 cm
Internal Dimensions (W x D x H) cm	47 x 37,5 x 35 cm	37x 28,5 x 30 cm	27,5 x 26 x 30,5 cm
Structure and Insulation	Atoxic plastic material int./est., thickness 40 mm		
Door	Nr 1 blind lid		
Key Lock	-		
Internal equipment	Nr 1 open wire basket		
Controller	Digital electronic thermostat		
Alarms	Acoustic and Visual for temperature deviations		
Refrigeration Type	Static R134a CFC free		
Defrost	Manual		
Mains Voltage	12V/24V; 110V/240V/50Hz-60Hz		
Ambient Temperature	+10/+32 °C; humidity 60%		
Weight kg	24 kg	17 kg	16 kg
Optional Accessories	Graphic Chart Recorder, Datalogger		

Authorized Distributor :

**Venchal
Scientific**

19 West. 34th Street,
Ste 1018 New York, NY 10001.

info@venchalscientific.com
www.venchalscientific.com