

Compact and Convenience

Under Counter or Counter Top.

Venchal Scientific 210 series refrigerators are ideal choice for effective sample storage.



- Built-in USB data logger, remote alarm contact
- RS485 interface for LIMS.
- Automatic Defrost
- Sensor Backup Facility: Dual Sensor System.
When the primary sensor fails, the secondary sensor will be activated.
- Perfect Thermal Insulation
- Access port for external temperature mapping.

- Alarm —
- Audible/visual alarms
 - High/Low temp.
 - DC low battery
 - Sensor Error
 - Power Failure
 - High ambient temperature
 - Door ajar.

Features :

- Intelligent microprocessor digital temperature controller for High accuracy of 0.1°C.
- Double pane tempered glass door with electrical heating and filled with gas, for perfect thermal Insulation.
- Inner chamber made of highly durable HIPS material, helps in easy cleaning.
- Equipped with high-quality shelves made from PVC-coated steel wire with tag cards and classification marks.
- Supported by highly efficient compressor with HCFC-FREE refrigerants for a greener footprint and better temperature performance.
- Equipped with LED lights, to quickly grab samples when the door is open

Technical Specifications :

	Model No.	210-055
Technical Data	Cabinet Type	Upright
	Capacity (L)	55
	Climate Class	N
	Defrost Mode	Automatic
	Refrigerant	R600a, HCFC- Free
	Noise(dB(A))	56
Performance	Cooling Performance (°C)	2°C
	Temperature Range (°C)	2°C ~ 8°C
	Ambient Temperature (°C)	16°C ~ 32°C
Control	Controller	Microprocessor Digital Controller
Function	USB Interface	Built In USB Interface
	Access Test Port	1 no. Ø 24.5 mm
	Alarm	Audible & Visible : High / Low Temperature, High Ambient temperature, Sensor Failure, Door Ajar, System Failure, Built in data logger USB Failure, Low Battery, Power Failure
Construction	External	Powder coating
	Internal	Aluminum plate with spraying
	Shelves	2(coated steel wired shelf)
	Door Lock with Keys	YES
	Lighting	LED
	Insulation Thickness	50 mm
	Caster	2 units of Universal Caster wheels with 2 Leveling Foot
	Data Logging/Time/Quantity	USB/Record every 1 minute / 365 days
	Door with heater	Yes
Electrical Data	Power Supply (V/Hz)	220 V / 50Hz, 220V / 60Hz
	Power Consumption (KWh/24h)	1.54
Dimensions	Internal Dimension (WxDxH)	444 x 440 x 404 mm
	External Dimension (WxDxH)	540 x 560 x 632 mm
	Net Wt.	35/38
Others	Certificate	CE, ISO9001 :2015

Ordering Information :

Model No.	Description
210-055	+2°C to 8°C Pharma Freezer, 55 Litres

* The model, parameters and performance specified in this brochure may be changed without prior notice because of product upgrading.

Compact and Convenience

Under Counter or Counter Top.

Venchal Scientific 210 series refrigerators are ideal choice for effective sample storage.



- Built-in USB data logger, remote alarm contact
- RS485 interface for LIMS.
- Automatic Defrost
- Sensor Backup Facility: Dual Sensor System.
When the primary sensor fails, the secondary sensor will be activated.
- Perfect Thermal Insulation
- Access port for external temperature mapping.

- Alarm
- Audible/visual alarms
 - High/Low temp.
 - DC low battery
 - Sensor Error
 - Power Failure
 - High ambient temperature
 - Door ajar.

Features :

- Intelligent microprocessor digital temperature controller for High accuracy of 0.1°C.
- Double pane tempered glass door with electrical heating and filled with gas, for perfect thermal Insulation.
- Inner chamber made of highly durable HIPS material, helps in easy cleaning.
- Equipped with high-quality shelves made from PVC-coated steel wire with tag cards and classification marks.
- Supported by highly efficient compressor with HCFC-FREE refrigerants for a greener footprint and better temperature performance.
- Equipped with LED lights, to quickly grab samples when the door is open

Technical Specifications :

	Model No.	210-130
Technical Data	Cabinet Type	Upright
	Capacity (L)	130
	Climate Class	N
	Defrost Mode	Automatic
	Refrigerant	R600a, HCFC- Free
	Noise(dB(A))	≤ 56
Performance	Cooling Performance (°C)	4°C
	Temperature Range (°C)	2°C ~ 8°C
	Ambient Temperature (°C)	16°C ~ 32°C
	Cooling Method	Direct air cooling
Control	Controller	Microprocessor Digital Controller
Function	USB Interface	Built In USB Interface
	Access Test Port	1 no. Ø 25 mm
	Alarm	Audible & Visible : High / Low Temperature, High Ambient temperature, Sensor Failure, Door Ajar, System Failure, Built in data logger USB Failure, Low Battery, Power Failure
	Temperature Recorder	Standard with build-in USB datalogger for temperature data recording
Construction	External	Epoxy Powder coating
	Internal	Aluminum plate with spraying
	Shelves	3(coated steel wired shelf)
	Door Lock with Keys	YES
	Lighting	LED
	Insulation Thickness	50 mm
	Caster	2 units of Universal Caster wheels with 2 Leveling Foot
	Data Logging/Time/Quantity	USB/Record every 10 minute / 2 Years
	Door with heater	Yes
	Standard Accessory	RS485, Remote alarm contact
Electrical Data	Power Supply (V/Hz)	220 V / 50Hz, 220V / 60Hz
	Power Consumption (KWh/24h)	1.8
Dimensions	Internal Dimension (WxDxH)	650 x 625 x 810 mm
	External Dimension (WxDxH)	650 x 625 x 810 mm
	Net Wt.	47/50
Others	Certificate	CE, ISO9001 :2015

Ordering Information :

Model No.	Description
210-130	+2°C to 8°C Pharma Freezer, 130 Litres

* The model, parameters and performance specified in this brochure may be changed without prior notice because of product upgrading.

Venchal Scientific 210 series refrigerators are ideal choice for effective sample storage.

Compact and Convenience



- Built-in USB data logger, remote alarm contact
- Automatic Defrost
- Sensor Backup Facility: Dual Sensor System.
When the primary sensor fails, the secondary sensor will be activated.
- Perfect Thermal Insulation
- Access port for external temperature mapping.
- RS232/485 interface for LIMS
- Alarms
 - Audible/visual alarms
 - High/Low temperature
 - Low battery
 - Sensor Failure
 - Door ajar
 - Power Failure

• Refrigeration System

Multi-duct vortex with finned evaporator prevents frosting and improve temperature uniformity.

• Intelligent Temperature Controller

High-precision microprocessor temperature control system with a bright LED digital display of 0.1°C temperature display precision.

• Effective Energy Saving

Effective power management system and air cooling design saves energy by more than 40%.

- **Anti-condensation**

Electrically heated design prevents condensation on the glass door.

- **Precision**

Venchal Refrigerators equipped with Seven temperature probes to ensure highly precise temperature control with almost no fluctuation.

- **Security System**

Self diagnostic facility and security is processed through well developed alarm system with Audible & Visual remote alarms.

- **Data Storage**

Data can be stored through USB or when connected to U-disk automatically even for more than 10 years.

- **Lighting System**

Inside chamber is equipped with LED lights.

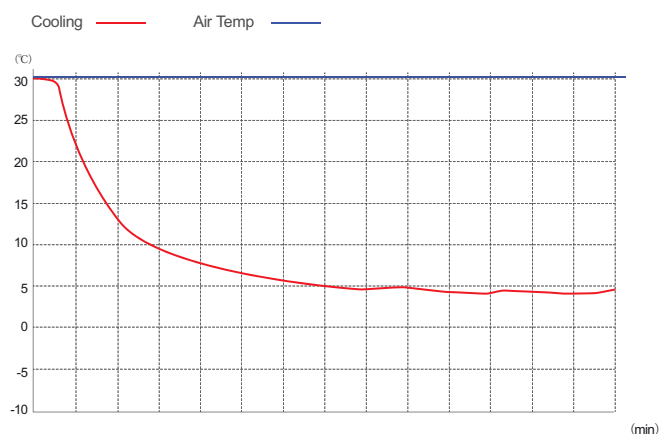
- **Human-oriented Design**

Elegant and invisible door handle.

Access port for temperature mapping, RS232/RS485 access port

High quality shelves of coated steel wires with tag cards and classification marks

Cooling Performance :



Technical Specifications :

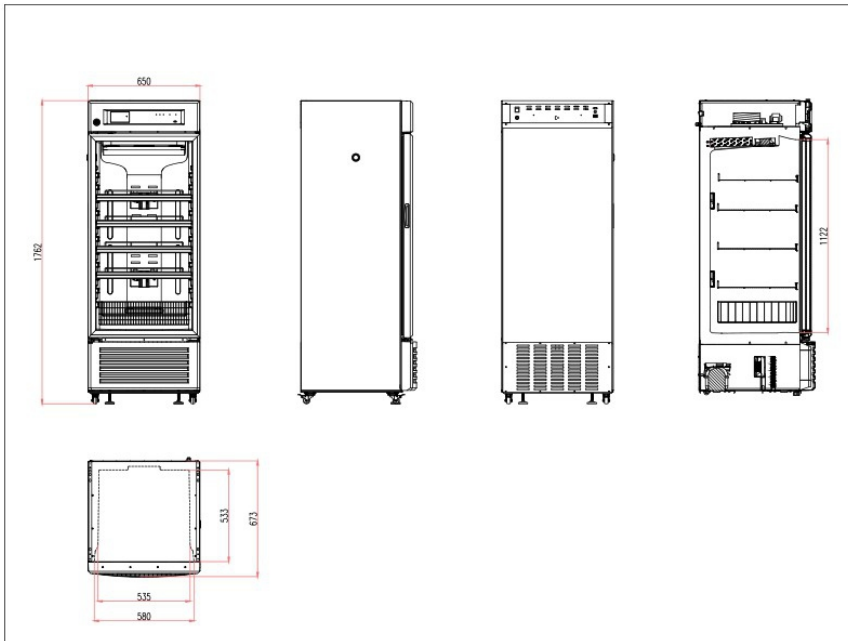
	Model No.	210-300
Technical Data	Cabinet Type	Upright
	Capacity (L)	315
	Climate Class	N
	Defrost Mode	Automatic
	Refrigerant	R600a, CFC- Free
	Cooling Method	Air Cooling
	Compressor	1 no
	Noise(dB(A))	≤ 56
Performance	Cooling Performance (°C)	4°C
	Temperature Range (°C)	2°C ~ 8°C
	Ambient Temperature (°C)	16°C ~ 32°C
Control	Controller	Microprocessor Digital Controller
	Display	Digital LED display
Function	USB Interface	Built In USB Interface
	Access Test Port	1 no. Ø 25 mm
	Alarm	Audible & Visible : High / Low Temp., High Ambient Temp., Condenser High Temp., Sensor Failure, Door Ajar, Low Battery, Power Failure, Built in Data logger, USB Failure, Remote Alarm
Construction	External	Epoxy Powder coated
	Internal	ABS
	Shelves	4 Adjustable Shelves + 1coated steel wired basket
	Door Lock with Keys	YES
	Lighting	LED
	Insulation Thickness	70mm
	Caster	4 units of Universal Caster wheels with 2 Leveling Foot
	Data Logging/Time/Quantity	USB/Record every 10 minute / 2 Years
	Door with heater	Yes
	RS 485	Yes
	Remote Alarm & Battery Backup	Yes
Electrical Data	Power Supply (V/Hz)	220 V / 50Hz
	Rated Power (W)	220
	Input Power (W)	285
	Current Consumption (KWh/24h)	2.05
	Rated Current (A)	1.35
Dimensions	Internal Dimension (WxDxH)	580 x 533 x 1122 mm
	External Dimension (WxDxH)	650 x 673 x 1762 mm
	Packing Dimension (WxDxH)	734 x 749 x 1800 mm
	Net Wt. / Gross Wt.	87/99 Kgs
Optional	Accessories	Printer, RS232
Others	Certificate	CE, ISO9001 :2015

Ordering Information :

Model No.	Description
210-300	+2°C to 8°C Pharma Freezer, 315 Litres

* The model, parameters and performance specified in this brochure may be changed without prior notice because of product upgrading.

External Dimensions :



Compact and Convenience

Venchal Scientific 210 series refrigerators are ideal choice for effective sample storage.



- Built-in USB data logger, remote alarm contact
- RS232/485 interface for LIMS.
- Automatic Defrost
- Sensor Backup Facility: Dual Sensor System.
When the primary sensor fails,
the secondary sensor will be activated.
- Perfect Thermal Insulation
- Access port for external temperature mapping.

- Alarm
- Audible/visual alarms
 - High/Low temp.
 - Low battery
 - Sensor Failure
 - System Failure
 - High ambient temperature
 - Door ajar
 - Power Failure
 - Relay
 - Condenser High temperature
 - Built in Data Logger USB Failure

- **Air Cooling :** The multi-duct vortex refrigeration system and finned evaporator can prevent frosting completely and improve temperature uniformity to a large extent
- **Energy Saving :** The refrigerator is equipped with “M + Energy Core” power management system and complete air cooling design, improving energy saving efficiency by more than 40%
- **Visibility :** The electrical heating + LOW-E design with double considerations can achieve a better anti-condensation effect for the glass door
- **Safety :** Seven temperature probes can ensure high precision of temperature control with nearly no fluctuation and thus can improve safety

Features :

- **Intelligent Temperature Control :**

Equipped with high-precision microcomputer temperature control system and 1 high brightness digital temperature display with a display precision of 0.1°C

Equipped with a remote alarm access port and 232/485 data access port

- **Security System :**

The well-developed audible & visual alarm system with multiple audible & visual alarm functions : high temperature alarm, low temperature alarm, sensor failure alarm, door opening alarm, power outage alarm

The turn-on delay and stopping interval protection function can ensure reliability in running

The door is equipped with a lock, preventing it from opening accidentally

- **Data Storage :**

Equipped with a USB export interface, which can be used for storing data from the last month and the current month automatically in PDF format

When a U-disk is connected, temperature data can be stored continuously and automatically (data can be stored for more than 10 years)

The printer is optional

- **Lighting System :**

Equipped with lighting system with LED lights, ensuring high visibility inside the cabinet

- **Human-oriented :**

Equipped with high-quality shelves made from PVC-coated steel wire with tag cards and classification marks, which are easy to clean

Equipped with invisible door handle, ensuring elegance of appearance

Equipped with testing port, bringing convenience to users in testing temperature inside the cabinet

- **Refrigeration System :**

Equipped with a compressor supplied by an international famous brand, high-efficiency air-cooled condenser and finned evaporator, ensuring fast refrigeration.



Technical Specifications :

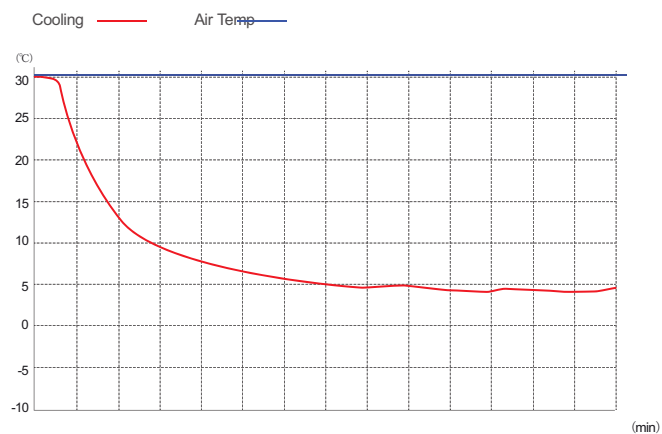
	Model No.	210-400
Technical Data	Cabinet Type	Upright
	Capacity (L)	400
	Climate Class	N
	Defrost Mode	Automatic
	Refrigerant	R600a, HCFC- Free
	Cooling Method	Air Cooling
	Compressor	1 no
	Noise(dB(A))	56
Performance	Cooling Performance (°C)	2°C
	Temperature Range (°C)	2°C ~ 8°C
	Ambient Temperature (°C)	16°C ~ 32°C
Control	Controller	Microprocessor Digital Controller
	Display	Digital LED display
Function	USB Interface	Built In USB Interface
	Access Test Port	1 no. Ø 24.5 mm
	Alarm	Audible & Visible : High / Low Temp., High Ambient Temp., Sensor Failure, Door Ajar, Relay, Condenser High Temp., System Failure, Built in data logger USB Failure, Low Battery, Power Failure
Construction	External	Powder coating
	Internal	ABS
	Shelves	6 Adjustable Shelves + 1 (coated steel wired basket)
	Door Lock with Keys	YES
	Lighting	LED
	Insulation Thickness	R/L - 40 mm, U/D - 70 mm, B - 50mm
	Caster	4 units of Universal Caster wheels with 2 Leveling Foot
	Data Logging/Time/Quantity	USB/Record every 1 minute / 365 days
	Door with heater	Yes
	RS232/485	Yes
Electrical Data	Power Supply (V/Hz)	220 V / 50Hz, 220V / 60Hz
	Rated Power (W)	280
	Input Power (W)	310
	Current Consumption (KWh/24h)	2.5
	Rated Current (A)	1.8
Dimensions	Internal Dimension (WxDxH)	580 x 533 x 1352 mm
	External Dimension (WxDxH)	650 x 673 x 1992 mm
	Packing Dimension (WxDxH)	734 x 749 x 2030 mm
	Net Wt. / Gross Wt.	95/108 Kgs
Optional	Accessories	Printer
Others	Certificate	CE, ISO9001 :2015

Ordering Information :

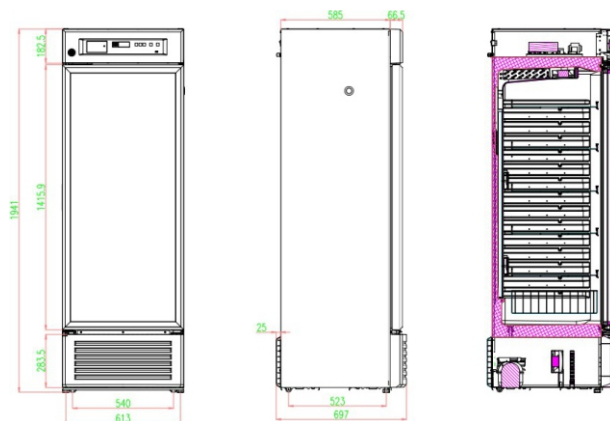
Model No.	Description
210-400	+2°C to 8°C Pharma Freezer, 400 Litres

* The model, parameters and performance specified in this brochure may be changed without prior notice because of product upgrading.

Cooling Performance :



External Dimensions :



Venchal Scientific 210 series refrigerators are ideal choice for effective sample storage.

Compact and Convenience



- Built-in USB data logger, remote alarm contact
- Automatic Defrost
- Sensor Backup Facility: Dual Sensor System.
When the primary sensor fails, the secondary sensor will be activated.
- Perfect Thermal Insulation
- Access port for external temperature mapping.
- RS232/485 interface for LIMS
- Alarms
 - Audible/visual alarms
 - High/Low temperature
 - Low battery
 - Sensor Failure
 - Door ajar
 - Power Failure

• Refrigeration System

Multi-duct vortex with finned evaporator prevents frosting and improve temperature uniformity.

• Intelligent Temperature Controller

High-precision microprocessor temperature control system with a bright LED digital display of 0.1°C temperature display precision.

• Effective Energy Saving

Effective power management system and air cooling design saves energy by more than 40%.

- **Anti-condensation**

Electrically heated design prevents condensation on the glass door.

- **Precision**

Venchal Refrigerators equipped with Seven temperature probes to ensure highly precise temperature control with almost no fluctuation.

- **Security System**

Self diagnostic facility and security is processed through well developed alarm system with Audible & Visual remote alarms.

- **Data Storage**

Data can be stored through USB or when connected to U-disk automatically even for more than 10 years.

- **Lighting System**

Inside chamber is equipped with LED lights.

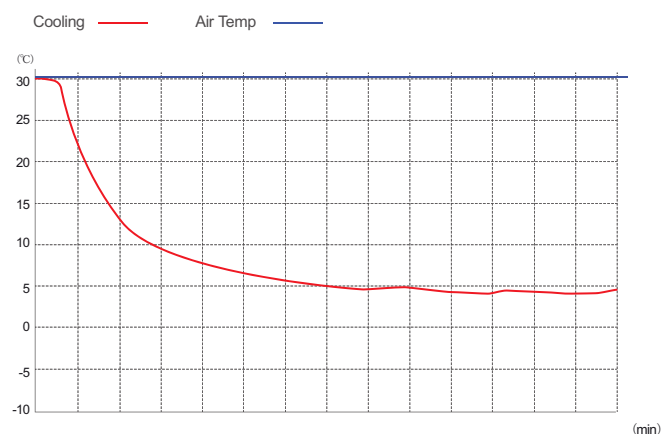
- **Human-oriented Design**

Elegant and invisible door handle.

Access port for temperature mapping, RS232/RS485 access port

High quality shelves of coated steel wires with tag cards and classification marks

Cooling Performance :



Technical Specifications :

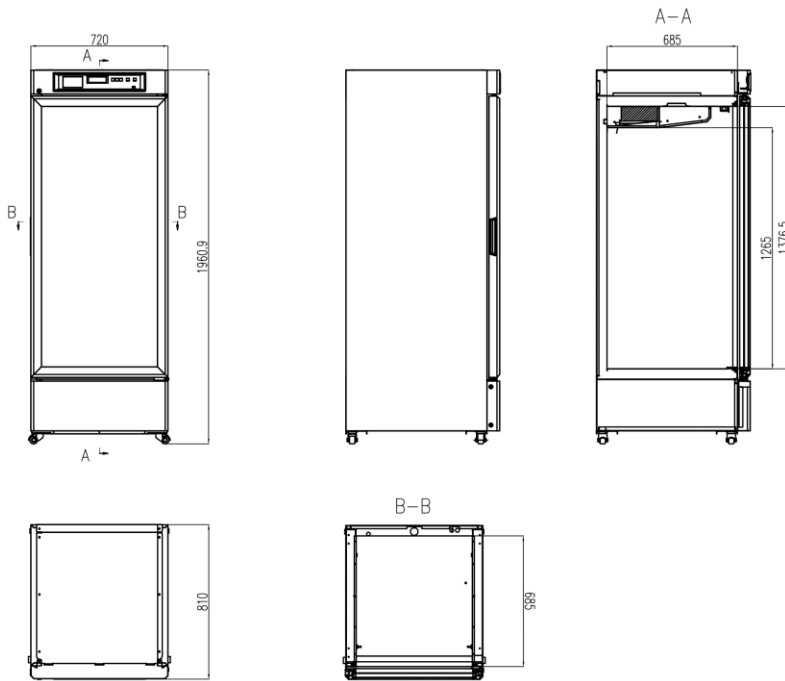
	Model No.	210-520
Technical Data	Cabinet Type	Upright
	Capacity (L)	525
	Climate Class	N
	Defrost Mode	Automatic
	Refrigerant	R290, CFC- Free
	Cooling Method	Air Cooling
	Compressor	1 no
	Noise(dB(A))	≤ 56
Performance	Cooling Performance (°C)	4°C
	Temperature Range (°C)	2°C ~ 8°C
	Ambient Temperature (°C)	16°C ~ 32°C
Control	Controller	Microprocessor Digital Controller
	Display	Digital LED display
Function	USB Interface	Built In USB Interface
	Access Test Port	1 no. Ø 25 mm
	Alarm	Audible & Visible : High / Low Temp., High Ambient Temp., Condenser High Temp., Sensor Failure, Door Ajar, Low Battery, Power Failure, Built in Data logger, USB Failure, Remote Alarm
Construction	External	Epoxy Powder coated
	Internal	Aluminum
	Shelves	6 Adjustable coated steel wired Shelves
	Door Lock with Keys	YES
	Lighting	LED
	Insulation Thickness	80mm
	Caster	4 units of Universal Caster wheels with 2 Leveling Foot
	Data Logging/Time/Quantity	USB/Record every 10 minute / 2 Years
	Door with heater	Yes
	RS 485	Yes
	Remote Alarm & Battery Backup	Yes
Electrical Data	Power Supply (V/Hz)	220 V / 50Hz
	Rated Power (W)	415
	Input Power (W)	548
	Current Consumption (KWh/24h)	3.81
	Rated Current (A)	2.49
Dimensions	Internal Dimension (WxDxH)	610 x 685 x 1264 mm
	External Dimension (WxDxH)	720 x 810 x 1961 mm
	Packing Dimension (WxDxH)	744 x 862 2055 mm
	Net Wt. / Gross Wt.	148 / 174 Kgs
Optional	Accessories	Printer, RS232
Others	Certificate	CE, ISO9001 :2015

Ordering Information :

Model No.	Description
210-520	+2°C to 8°C Pharma Freezer, 525 Litres

* The model, parameters and performance specified in this brochure may be changed without prior notice because of product upgrading.

External Dimensions :



Venchal Scientific 210 series refrigerators are ideal choice for effective sample storage.

Compact and Convenience



- Built-in USB data logger, remote alarm contact
- Automatic Defrost
- Sensor Backup Facility: Dual Sensor System.
When the primary sensor fails, the secondary sensor will be activated.
- Perfect Thermal Insulation
- Access port for external temperature mapping.
- RS232/485 interface for LIMS
- Alarms
 - Audible/visual alarms
 - High/Low temperature
 - Low battery
 - Sensor Failure
 - Door ajar
 - Power Failure

• Refrigeration System

Multi-duct vortex with finned evaporator prevents frosting and improve temperature uniformity.

• Intelligent Temperature Controller

High-precision microprocessor temperature control system with a bright LED digital display of 0.1°C temperature display precision.

• Effective Energy Saving

Effective power management system and air cooling design saves energy by more than 40%.

- **Anti-condensation**

Electrically heated design prevents condensation on the glass door.

- **Precision**

Venchal Refrigerators equipped with Seven temperature probes to ensure highly precise temperature control with almost no fluctuation.

- **Security System**

Self diagnostic facility and security is processed through well developed alarm system with Audible & Visual remote alarms.

- **Data Storage**

Data can be stored through USB or when connected to U-disk automatically even for more than 10 years.

- **Lighting System**

Inside chamber is equipped with LED lights.

- **Human-oriented Design**

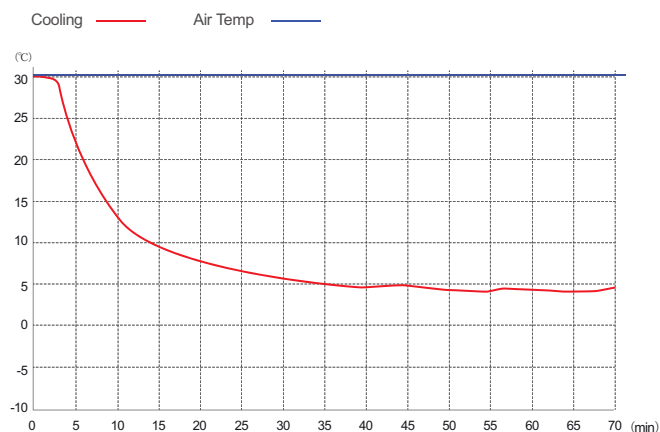
Elegant door handle.

Remote alarm access port for temperature mapping, RS232/RS485 access port

High quality shelves of coated steel wires with tag cards and classification marks

Equipped with testing port, bringing convenience to users in testing temperature inside the cabinet.

Cooling Performance :



Technical Specifications :

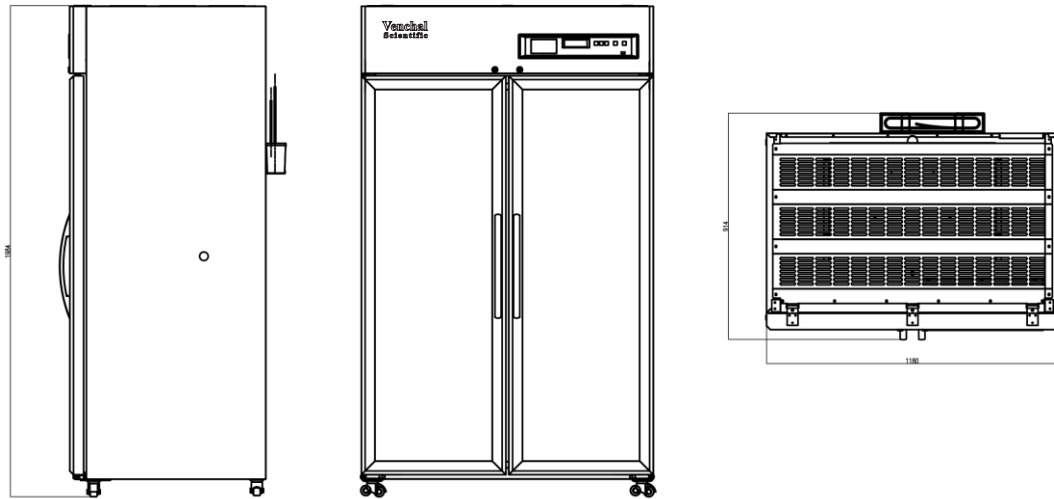
	Model No.	210-1000
Technical Data	Cabinet Type	Upright
	Capacity (L)	1015
	Climate Class	N
	Defrost Mode	Automatic
	Refrigerant	R290a, CFC- Free
	Cooling Method	Air Cooling
	Compressor	1 no
	Noise(dB(A))	≤ 56
Performance	Cooling Performance (°C)	2°C
	Temperature Range (°C)	2°C ~ 8°C
	Ambient Temperature (°C)	16°C ~ 32°C
Control	Controller	Microprocessor Digital Controller
	Display	Digital LED display
Function	USB Interface	Built In USB Interface
	Access Test Port	1 no. Ø 24.5 mm
	Alarm	Audible & Visible : High / Low Temp., Sensor Failure, Door Ajar, Low Battery, Power Failure, Relay
Construction	External	PCM
	Internal	Aluminum Powder Coated / Stainless steel (Optional)
	Shelves	12 coated steel wired shelves
	Door Lock with Keys	YES
	Lighting	LED
	Insulation Thickness	55mm
	Caster	4 units of Universal Caster wheels with 2 casters with brake
	Data Logging/Time/Quantity	USB/Record every 1 minute / 365 days
	Door with heater	Yes
	RS232/485	Yes
Electrical Data	Power Supply (V/Hz)	220 V / 50Hz, 220V / 60Hz, 110 V / 50Hz
	Rated Power (W)	700
	Input Power (W)	796
	Current Consumption (KWh/24h)	9.33
	Rated Current (A)	3.62
Dimensions	Internal Dimension (WxDxH)	1070 x 670 x 1515 mm
	External Dimension (WxDxH)	1180 x 900 x 1990 mm
	Packing Dimension (WxDxH)	1256 x 931 x 2115 mm
	Net Wt. / Gross Wt.	223 / 262 Kgs
Optional	Accessories	Printer
Others	Certificate	CE, ISO9001 :2015

Ordering Information :

Model No.	Description
210-1000	+2°C to 8°C Pharma Freezer, 1015 Litres

* The model, parameters and performance specified in this brochure may be changed without prior notice because of product upgrading.

External Dimensions :



Venchal Scientific 210 series refrigerators are ideal choice for effective sample storage.

Compact and Convenience



- Built-in USB data logger, remote alarm contact
- Automatic Defrost
- Sensor Backup Facility: Dual Sensor System.
When the primary sensor fails, the secondary sensor will be activated.
- Perfect Thermal Insulation
- Access port for external temperature mapping.
- RS232/485 interface for LIMS
- Alarms
 - Audible/visual alarms
 - High/Low temperature
 - Low battery
 - Sensor Failure
 - Door ajar
 - Power Failure, etc.

• Refrigeration System

Multi-duct vortex with finned evaporator prevents frosting and improve temperature uniformity.

• Intelligent Temperature Controller

High-precision microprocessor temperature control system with a bright LED digital display of 0.1°C temperature display precision.

• Effective Energy Saving

Effective power management system and air cooling design saves energy by more than 40%.

- **Anti-condensation**

Electrically heated design prevents condensation on the glass door.

- **Precision**

Venchal Refrigerators equipped with Seven temperature probes to ensure highly precise temperature control with almost no fluctuation.

- **Security System**

Self diagnostic facility and security is processed through well developed alarm system with Audible & Visual remote alarms.

- **Data Storage**

Data can be stored through USB or when connected to U-disk automatically even for more than 10 years.

- **Lighting System**

Inside chamber is equipped with LED lights.

- **Human-oriented Design**

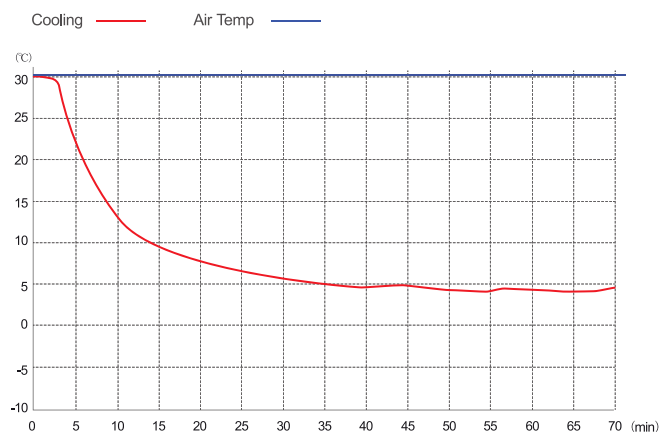
Elegant door handle.

Remote alarm access port for temperature mapping, RS232/RS485 access port

High quality shelves of coated steel wires with tag cards and classification marks

Equipped with testing port, bringing convenience to users in testing temperature inside the cabinet.

Cooling Performance :



Technical Specifications :

	Model No.	210-1500
Technical Data	Cabinet Type	Upright
	Capacity (L)	1505
	Climate Class	N
	Defrost Mode	Automatic
	Refrigerant	R290a, CFC- Free
	Cooling Method	Air Cooling
	Compressor	1 no
	Noise(dB(A))	≤ 56
Performance	Cooling Performance (°C)	4°C
	Temperature Range (°C)	2°C ~ 8°C
	Ambient Temperature (°C)	16°C ~ 32°C
Control	Controller	Microprocessor Digital Controller
	Display	Digital LED display
Function	USB Interface	Built In USB Interface
	Access Test Port	1 no. Ø 25 mm
	Alarm	Audible & Visible : High / Low Temp., Sensor Failure, High Ambient Temp., Condenser High Temp., Relay, Door Ajar, Low Battery, Power Failure, Sensor Failure, Built in Data Logger USB Failure, Remote Alarm
Construction	External	PCM
	Internal	Stainless steel
	Shelves	18 coated steel wired shelves
	Door Lock with Keys	YES
	Lighting	LED
	Insulation Thickness	55mm
	Caster	4 units of Universal Caster wheels with 2 casters with brake
	Data Logging/Time/Quantity	USB/Record every 10 minute / 2 Years
	Door with heater	Yes
	Standard Accessory	RS 485, Remote Alarm, Battery Backup
Electrical Data	Power Supply (V/Hz)	220 V / 50Hz
Dimensions	Internal Dimension (WxDxH)	1685 x 600 x 1385 mm
	External Dimension (WxDxH)	1975 x 822 x 1975 mm
	Net Wt. / Gross Wt.	223 / 262 Kgs
Optional	Accessories	Printer, RS232
Others	Certificate	CE, ISO9001 :2015

Ordering Information :

Model No.	Description
210-1500	+2°C to 8°C Pharma Freezer, 1505 Litres

* The model, parameters and performance specified in this brochure may be changed without prior notice because of product upgrading.

External Dimensions :

