

Deep Freezers (-20°C)

■ Deep Freezer

Venchal Scientific 2512 series Deep Freezers are ideal choice for effective sample storage.

Compact and Convenience



- This Deep freezer is designed with High-quality steel plate structure with phosphate coating and low noise design can create a comfortable environment.
- High-precision microprocessor digital temperature control system has the ability to set the temperature inside the cabinet in the range of -10°C ~-25°C.
- Audible & Visible Alarm Security System

• Refrigeration System

Environmentally friendly Freon-free refrigerant and high-efficiency enclosed compressor can guarantee fast cooling and are energy-saving and low noise.

The condenser installed on the bottom ensures temperature stability and system reliability.

The CFC-free polyurethane foam technology and the thicker insulating layer can improve the effect of thermal insulation.

• Intelligent Temperature Controller

High-precision microprocessor temperature control system ensures an adjustable temperature within a range from -10°C to -25°C inside the cabinet and platinum resistor temperature sensors ensure more precise temperature control.

Deep Freezers (-20°C)

- **Effective Energy Saving**

Effective power management system and Direct cooling design saves energy by more than 40%.

- **Security System**

Self diagnostic facility and security is processed through well developed alarm system with Audible & Visual alarms.

High/low temperature alarm, power failure alarm, door ajar alarm, System failure, Main board communication error
High ambient temperature, Condenser cooling failure.

Startup delay and stop interval protection function to ensure reliable operation

Keyboard lock and password protection function to prevent arbitrary adjustment of operating parameters

Safety door lock design, ensure sample storage is more secure.

- **Display**

The digital temperature display can show various parameters simultaneously, such as temperature inside the cabinet, power voltage and environmental temperature, indicating operating status clearly.

- **Construction and Design**

The arc angle-shaped single door frame and cabinet design makes its appearance more attractive.

Exterior is made of High-quality steel plate structure processed with phosphate coating and ABS liner are corrosion resistant.

The two-layer thermal insulating foamed door can prevent loss of refrigerating capacity in an effective way. The cabinet is made from HCFC, CFC-free polyurethane material, which can improve its heat insulating performance to a large extent.

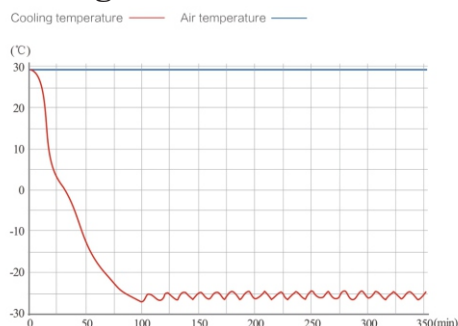
Seven transparent drawers can be used for storage based on classification.

Two access port for temperature mapping

The door is equipped with a lock, improving security of sample storage.

Low noise design can create a comfortable work environment.

Cooling Performance :



Deep Freezers (-20°C)

Technical Specifications :

	Model No.	2512-270	2512-365
Technical Data	Cabinet Type	Upright	
	Capacity (L)	270 L	365 L
	Climate Class	N	
	Defrost Mode	Manual	
	Refrigerant	CFC / HCFC Free	
	Cooling Method	Direct Cooling	
	Compressor	1 no	
	Noise(dB(A))	≤ 56	
Performance	Cooling Performance (°C)	-25°C	
	Temperature Range (°C)	-10°C ~ -25°C	
	Ambient Temperature (°C)	16°C ~ 32°C	
Control	Controller	Microprocessor Digital Controller	
	Display	Digital LED display	
Function	Access Test Port	1 no.	
	Alarm	Audible & Visible : High / Low Temp., Sensor Failure, Power Failure, Door Ajar	
Construction	External	Powder Coated Steel	
	Internal	Aluminum with spray painting (304 SS Optional)	304 Stainless Steel
	Door	1	Outer 1, 4 Inner Door
	Shelves (Adjustable)	7 ABS	3 SS Stainless Steel, 4 Compartment
	Door Lock with Keys	YES	
	Insulation Thickness	100mm	110mm
	Caster	2 no Universal Caster wheels + 2 Leveling Feet	4 no Universal Caster wheels + 2 Leveling Feet
	Data Logging/Time/Quantity	-	USB/Record every 10 minute / 2 years
	Battery Backup	-	Yes
Electrical Data	Power Supply (V/Hz)	220~240V / 50Hz	
	Rated Power (W)	120	-
	Input Power (W)	240	-
	Current Consumption (KWh/24h)	1.21	11
	Rated Current (A)	1.08	5.32
Dimensions	Internal Dimension (WxDxH)	500 x 460 x 1235 mm	470 x 578 x 1250 mm
	External Dimension (WxDxH)	700 x 640 x 1792 mm	777 x 873 x 1967 mm
	Packing Dimension (WxDxH)	760 x 720 x 1885 mm	895 x 1003 x 2186 mm
	Net Wt. / Gross Wt.	90/98 Kgs	208/277 Kgs
Optional	Accessories	Printer, RS 485, RS 232	
Others	Certificate	CE, ISO9001 :2015	

Ordering Information :

Model No.	Description
2512-270	-10°C to -25°C Ultra Low Deep Freezer, 270 Liters
2512-365	-10°C to -25°C Ultra Low Deep Freezer, 365 Liters

* The model, parameters and performance specified in this brochure may be changed without prior notice because of product upgrading.

Deep Freezers (-20°C)

Venchal Scientific 2512 series Deep Freezers are ideal choice for effective sample storage.

Compact and Convenience



- This Ultra-low temperature freezer is designed with two compressors and two chambers, which allows you to control the upper chamber and lower chamber independently.
- High-precision microprocessor digital temperature control system has the ability to set the temperature inside the cabinet in the range of -10°C ~-25°C.
- Audible & Visible Alarm Security System

• Refrigeration System

Environmentally friendly Freon-free refrigerant and high-efficiency enclosed double-compressor can guarantee fast cooling and are energy-saving and low noise.

The condenser installed on the bottom ensures temperature stability and system reliability.

The CFC /HCFC-free polyurethane foam technology and the thicker insulating layer can improve the effect of thermal insulation.

• Intelligent Temperature Controller

High-precision microprocessor temperature control system ensures an adjustable temperature within a range from -10°C to - 25°C inside the cabinet and platinum resistor temperature sensors ensure more precise temperature control.

Freezer is equipped with two compressors, so independent control of the upper chamber and lower chamber can be realized.

Deep Freezers (-20°C)

Deep Freezer

- **Effective Energy Saving**

Effective power management system and Direct cooling design saves energy by more than 40%.

- **Security System**

Self diagnostic facility and security is processed through well developed alarm system with Audible & Visual alarms.

The turn-on delay and stopping interval protection function can ensure reliability in running.

- **Display**

Dual digital LED temperature display can indicate operating status clearly for upper chamber and lower chamber separately.

- **Construction and Design**

The arc angle-shaped double door frame and cabinet design makes its appearance more attractive.

Exterior is made of High-quality steel plate structure processed with phosphate coating and ABS liner are corrosion resistant.

Built in Temperature Data Storage can record 100,000 sets of data, records before more than 100,000 sets of data are automatically overwritten.

Elegant and invisible door handle.

The built-in door gasket is dust proof and easy to clean.

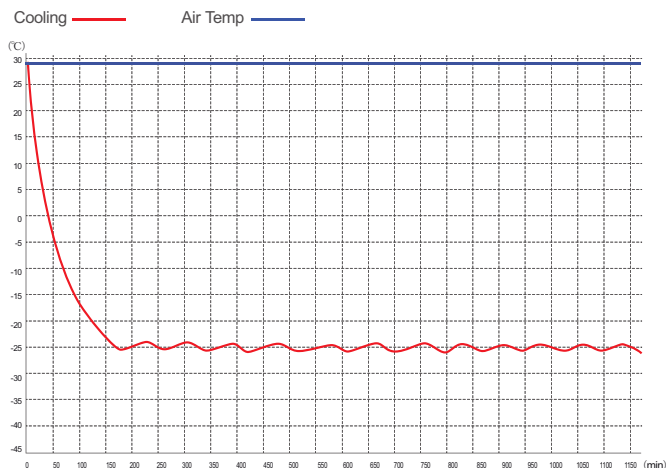
Each chamber is equipped with 6 drawers, to store more sample storage.

Two access port for temperature mapping

The door is equipped with a lock, improving security of sample storage.

Low noise design can create a comfortable work environment.

Cooling Performance :



Deep Freezers (-20°C)

Technical Specifications :

	Model No.	2512-450
Technical Data	Cabinet Type	Upright
	Capacity (L)	450 L
	Climate Class	N
	Defrost Mode	Manual
	Refrigerant	CFC / HCFC - Free
	Cooling Method	Direct Cooling
	Compressor	2 no
	Noise(dB(A))	≤ 56
Performance	Cooling Performance (°C)	-25°C
	Temperature Range (°C)	-10°C ~ -25°C
	Ambient Temperature (°C)	16°C ~ 32°C
Control	Controller	Microprocessor Digital Controller
	Display	Digital LED display
Function	Access Test Port	2 no.
	Alarm	Audible & Visible : High / Low Temp., Sensor Failure, High Ambient Temp. High Condenser, Door Ajar, Low Battery, Power Failure, USB Datalog Failure, Supply Error, Main board communication Error,
Construction	External	Powder Coated Steel
	Internal	ABS
	Doors	Double Door
	Shelves	6 x 2 ABS Drawers
	Door Lock with Keys	YES
	Insulation Thickness	80mm
	Caster	4 units of Universal Caster wheels (2 Casters with brake)
	Data Logging/Time/Quantity	USB/Record every 10 minute / 2 Years
	Door with heater	Yes
	Electrical Data	Power Supply (V/Hz)
Rated Power (W)		206
Input Power (W)		-
Current Consumption (KWh/24h)		2.24
Rated Current (A)		1.9
Dimensions	Internal Dimension (WxDxH)	(650 x 570 x 627 mm) x 2
	External Dimension (WxDxH)	810 x 735 x 1960 mm
	Packing Dimension (WxDxH)	895 x 820 x 2035 mm
	Net Wt. / Gross Wt.	136/148 Kgs
Optional	Accessories	Printer,RS232,Remote alarm contact
Others	Certificate	CE, ISO9001 :2015

Ordering Information :

Model No.	Description
2512-450	-10°C to -25°C Ultra Low Deep Freezer, 450 Litres, Double Door

* The model, parameters and performance specified in this brochure may be changed without prior notice because of product upgrading.